

PRECAUTIONS
Wiring Color Codes

Two-color wires are indicated by a 2-letter symbol. The first letter indicates the base color of the wire and the second indicates the color of the stripe.

CODE	COLOR
B	BLACK
Br	BROWN
G	GREEN
L	BLUE
Lb	LIGHT BLUE
Lg	LIGHT GREEN
O	ORANGE
R	RED
Y	YELLOW
W	WHITE

23.4a Wiring diagram color codes

- c) Remove the door panel(s) and check the actuator wiring connections to see if they're loose or damaged. Inspect the actuator rods (if equipped) to make sure they aren't bent or damaged. Inspect the actuator wiring for damaged or loose connections. The actuator can be checked by applying battery power momentarily. A discernible click indicates that the solenoid is operating properly.

22 Power window system – description and check

The power window system operates the electric motors mounted in the doors which lower and raise the windows. The system consists of the control switches, the motors (regulators), glass mechanisms and associated wiring.

Because of the complexity of the power window system and the special tools and techniques required for diagnosis, repair should be left to a dealer service department or a repair shop. However, it is possible for the home mechanic to make simple checks of the wiring connections and motors for minor faults which can be easily repaired. These include:

- a) Inspect the power window actuating switches for broken wires and loose connections.
- b) Check the power window fuse and or circuit breaker.
- c) Remove the door panel(s) and check the power window motor wires to see if they're loose or damaged. Inspect the glass mechanisms for damage which could cause binding.

23 Wiring diagrams – general information

Refer to illustrations 23.4a and 23.4b

Since it isn't possible to include all wiring diagrams for every year covered by this manual, the following diagrams are those that are typical and most commonly needed.

Prior to troubleshooting any circuits, check the fuse and circuit breakers (if equipped) to make sure they're in good condition. Make sure the battery is properly charged and check the cable connections (see Chapter 1).

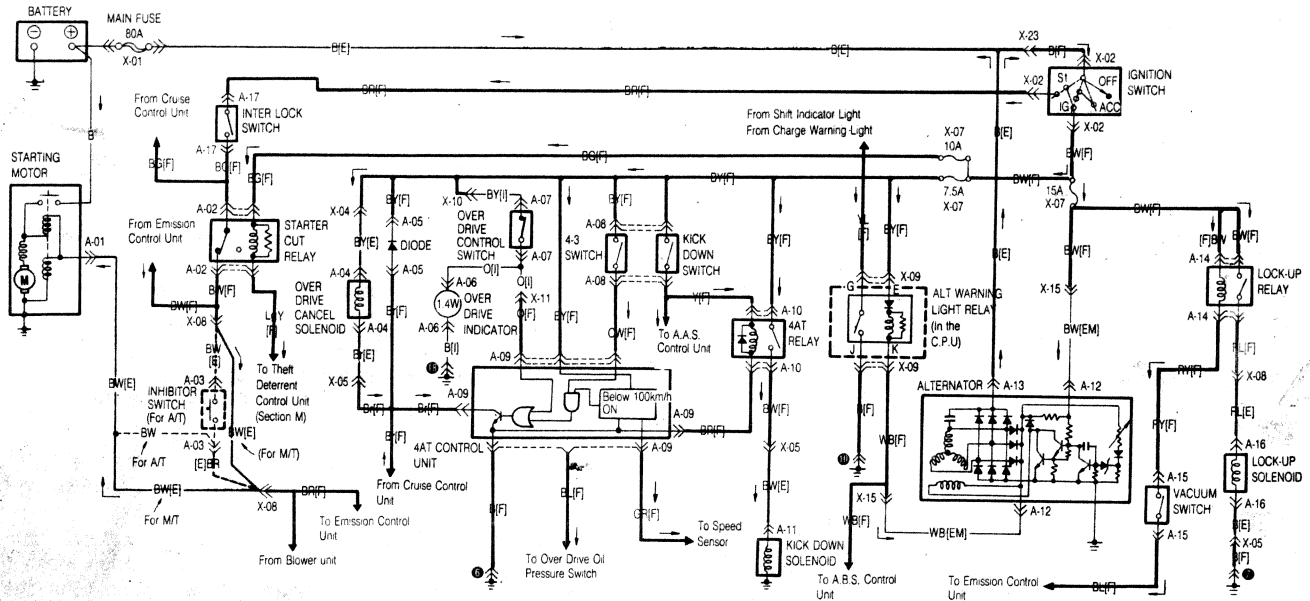
When checking a circuit, make sure that all connectors are clean, with no broken or loose terminals. When unplugging a connector, do not pull on the wires. Pull only on the connector housings themselves.

Refer to the accompanying tables for the wire color codes and symbols applicable to your vehicle (**see illustrations**).

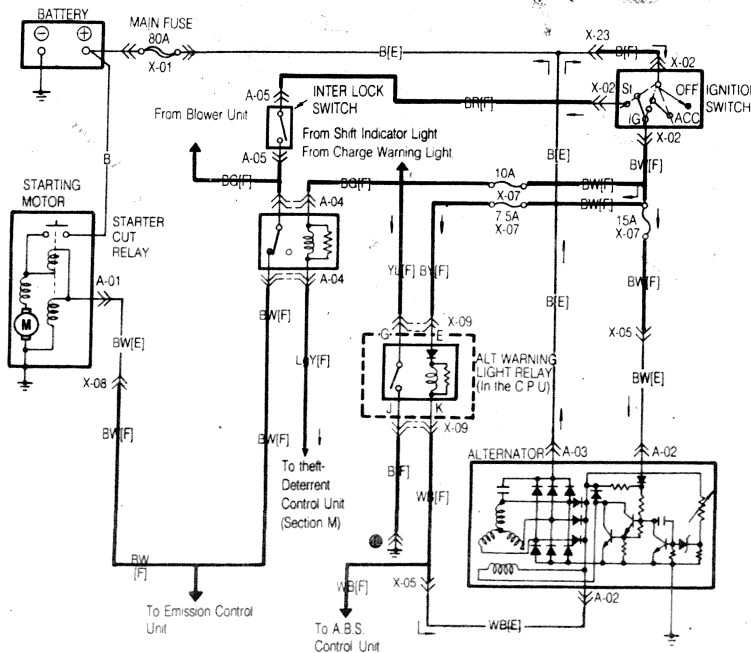
Battery	Ground	Fuse	Main Fuse	Motor
Coil solenoid	Resistance	Variable resistance	Thermister	Diode
Condenser	Transistor	Pump	Light	Horn
Speaker	Cigarette lighter	Heater	Illuminating Diode	Zener Diode

23.4b Wiring diagram symbols

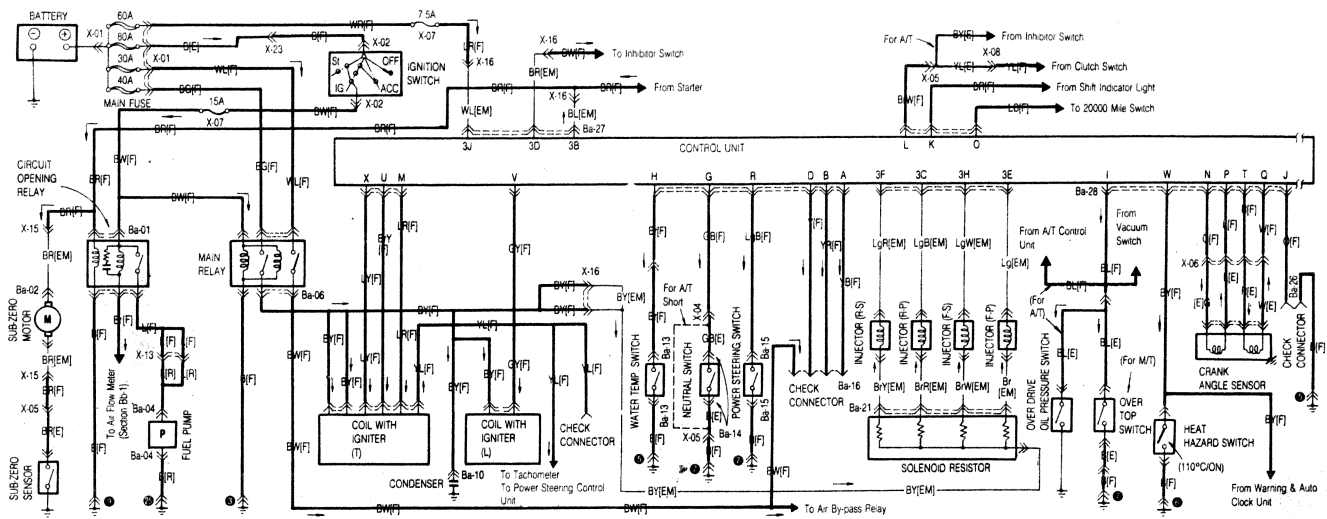
WIRING DIAGRAMS START ON NEXT PAGE



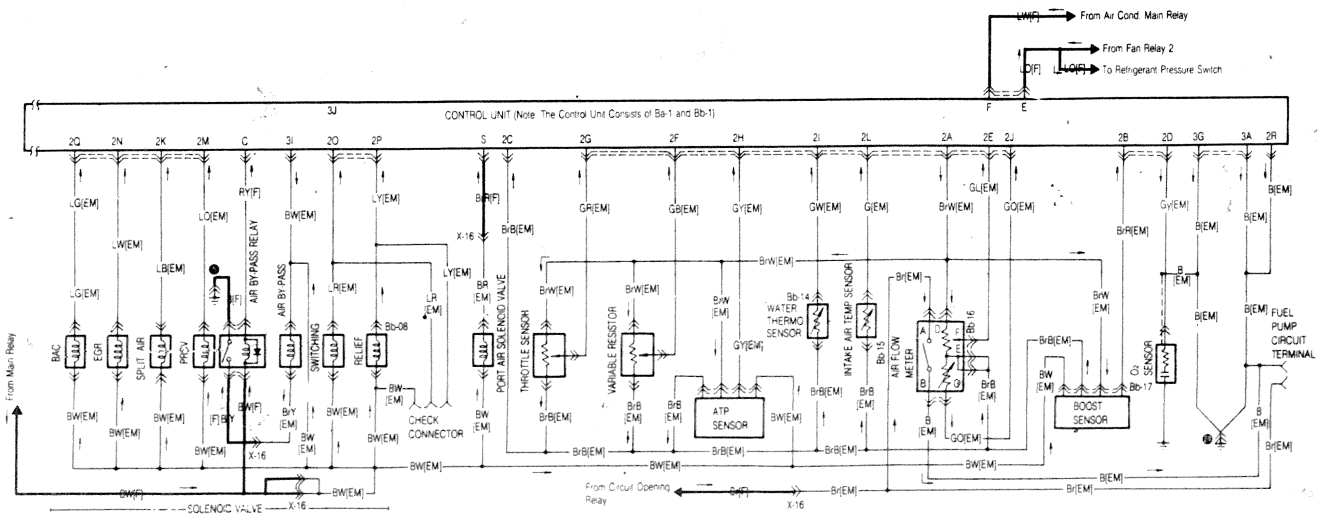
Starting, charging and automatic transmission overdrive and lockup system (non-turbocharged models) wiring diagram (1987 shown, 1986 similar)



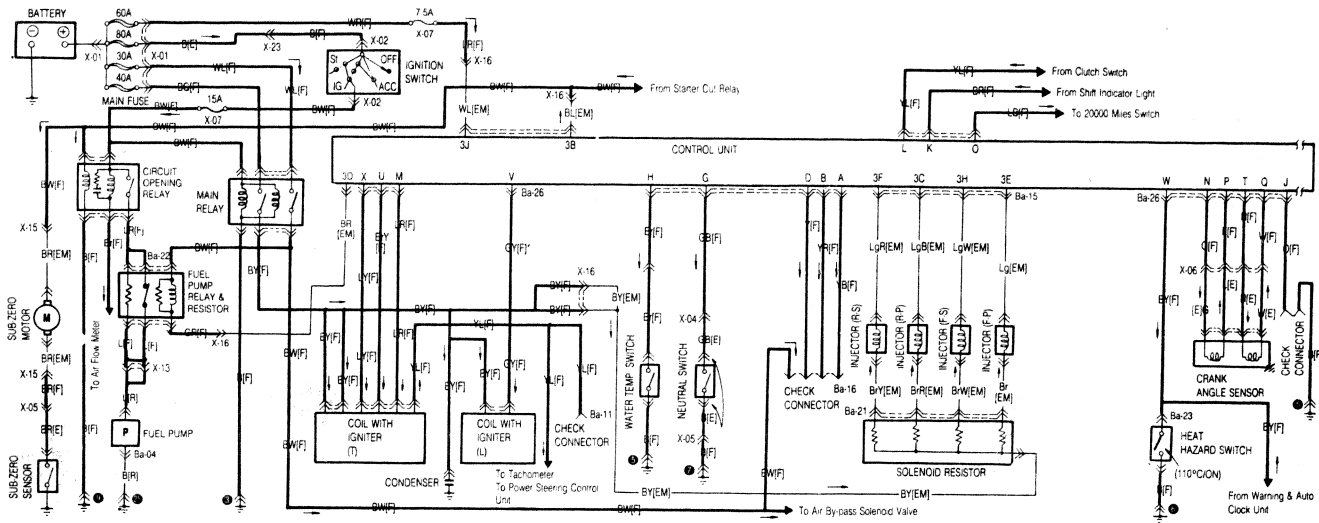
Starting and charging system (turbocharged models) wiring diagram (1987 shown, 1986 similar)



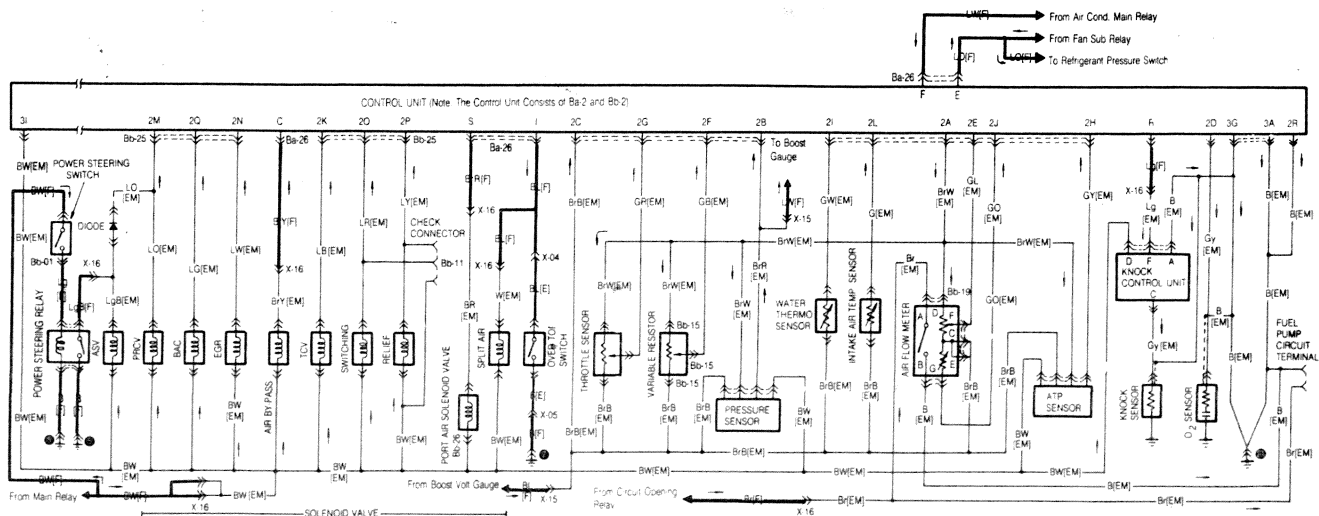
EGI, emission control, fuel pump, sub-zero starting system (non-turbocharged models) wiring diagram (1987 shown, 1986 similar).



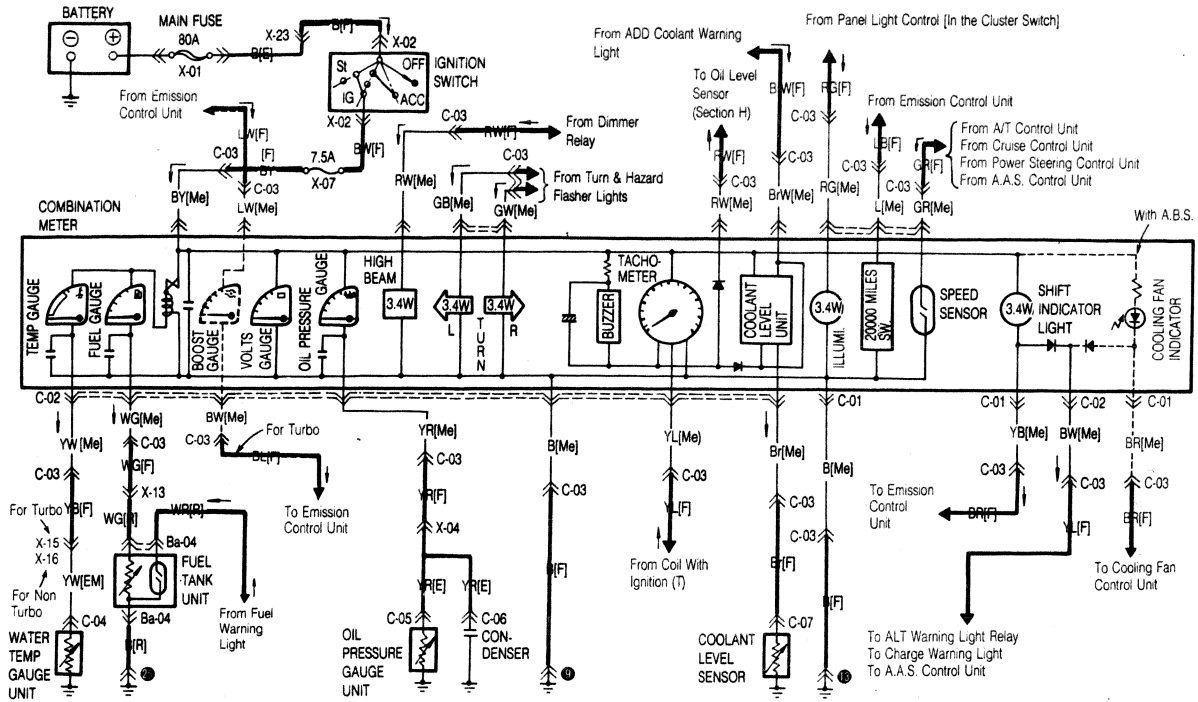
EGI, emission control, fuel pump, sub-zero starting system (non-turbocharged models) wiring diagram (continued) (1987 shown, 1986 similar)



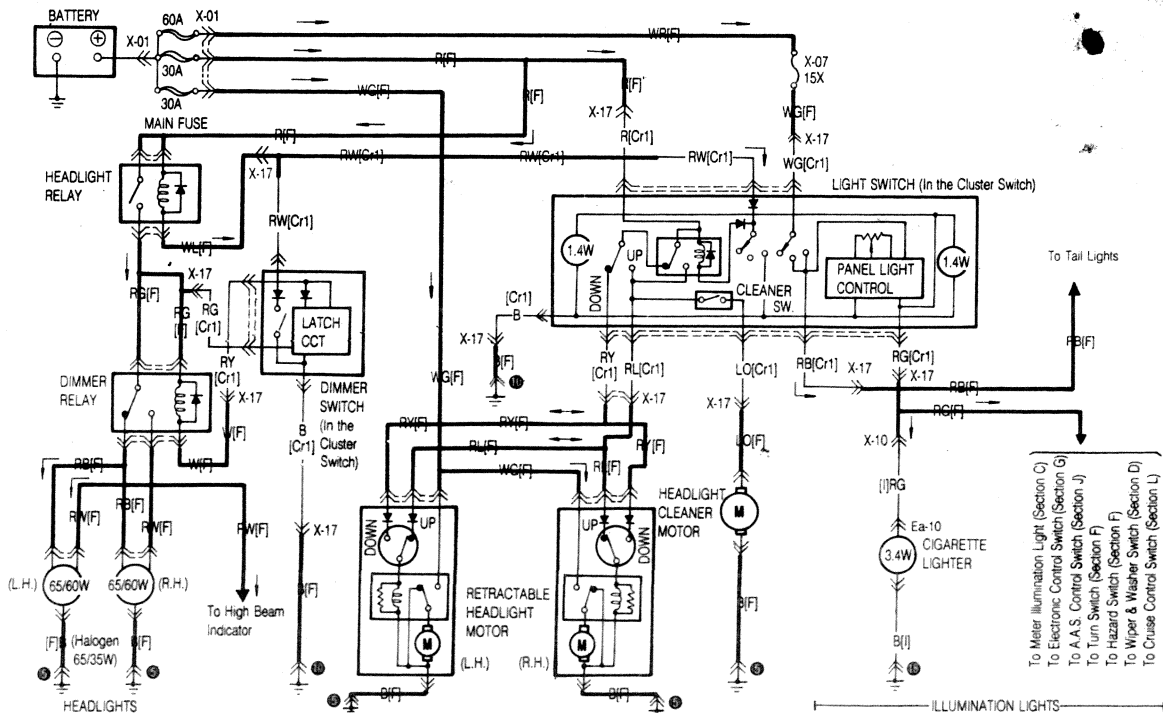
EGI, emission control, fuel pump, sub-zero starting system (turbocharged models) wiring diagram (1987 shown, 1986 similar)



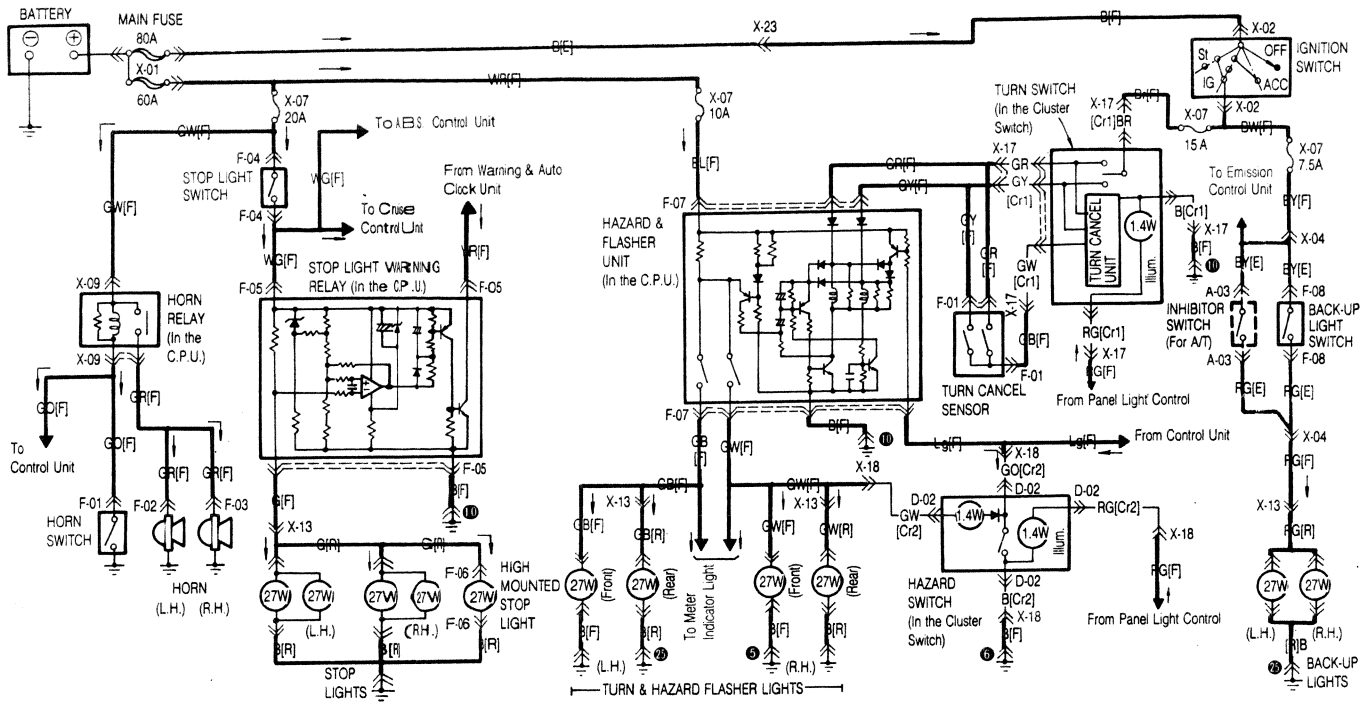
EGI, emission control, fuel pump, sub-zero starting system (turbocharged models) wiring diagram (continued) (1987 shown, 1986 similar)



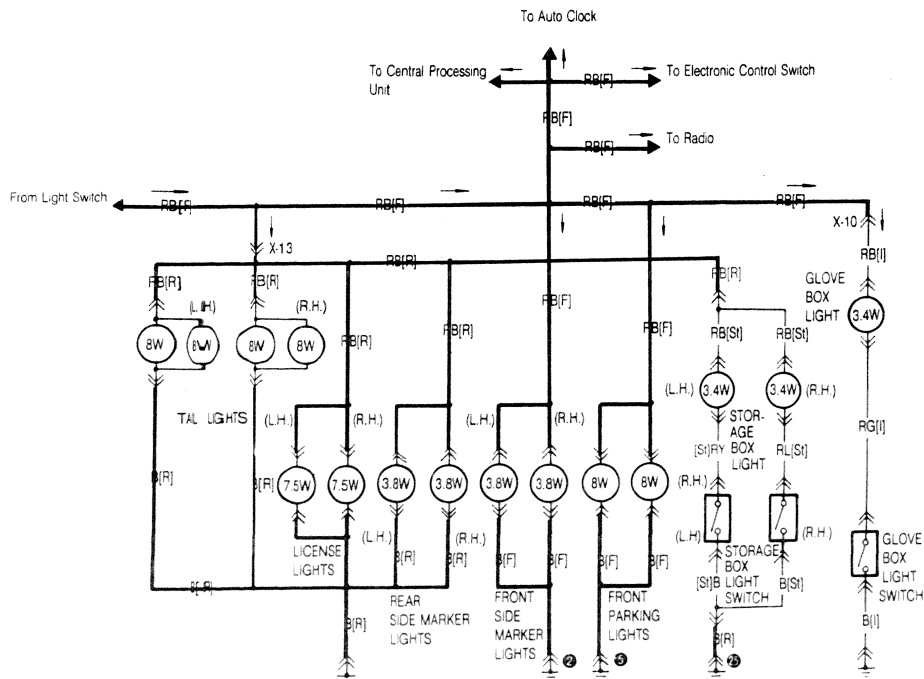
Instrument cluster (combination meter) and warning light system wiring diagram (1987 shown, 1986 similar)



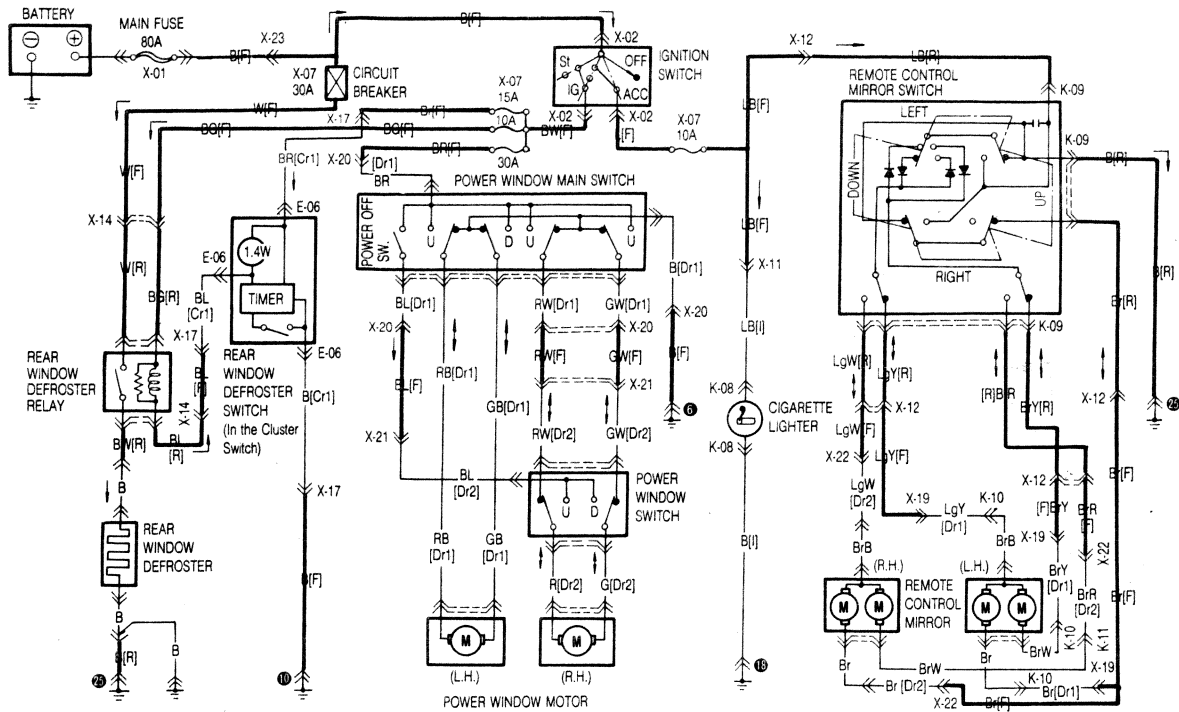
Headlights, retractor motor system, headlight cleaner and illumination light wiring diagram (1987 shown, other models similar)



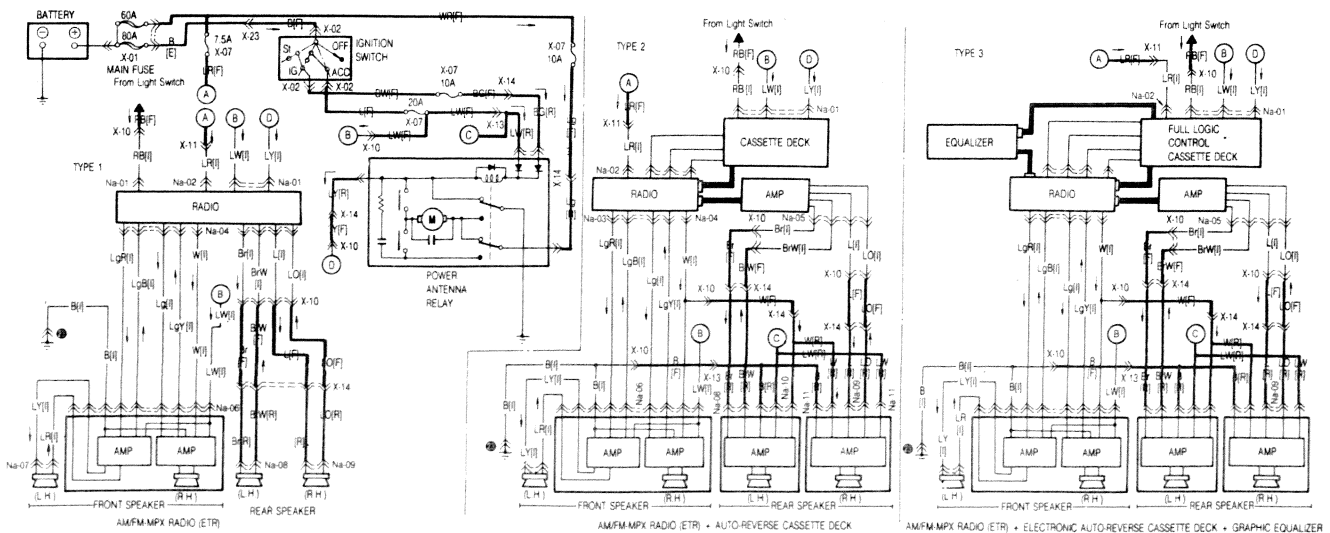
Horn, brake, turn and hazard signal and backup light wiring diagram (1987 shown, 1986 similar)



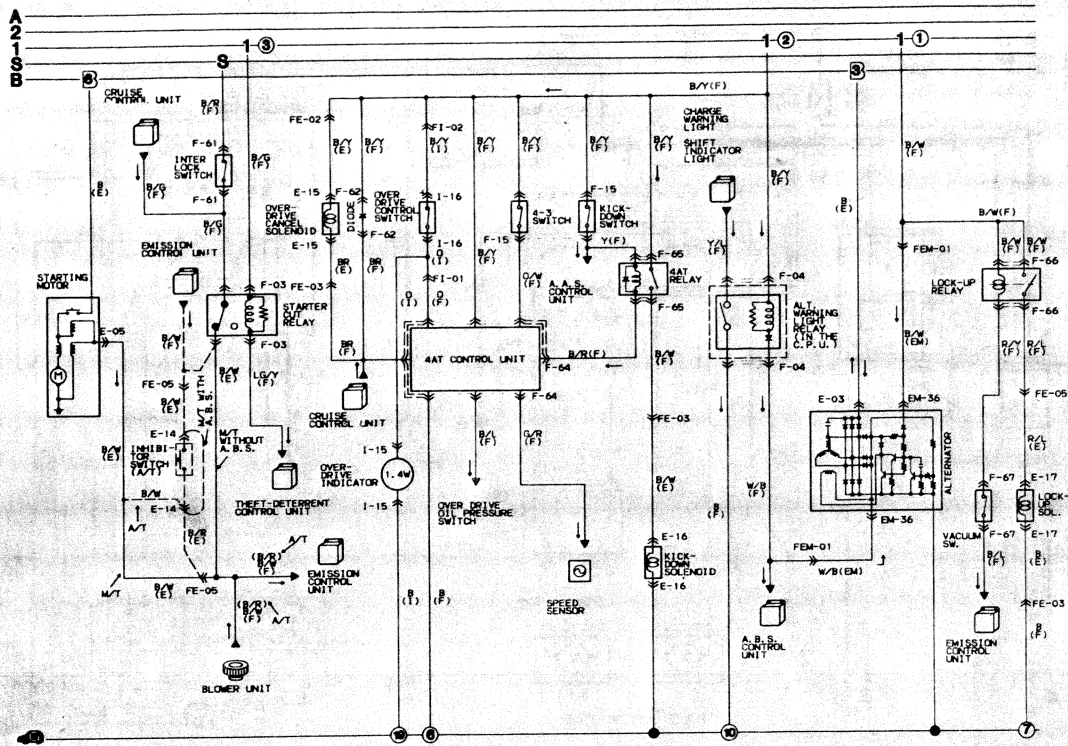
Tail, license plate, front and rear side marker, front parking, storage box and glove box light wiring diagram (1987 shown, 1986 similar)



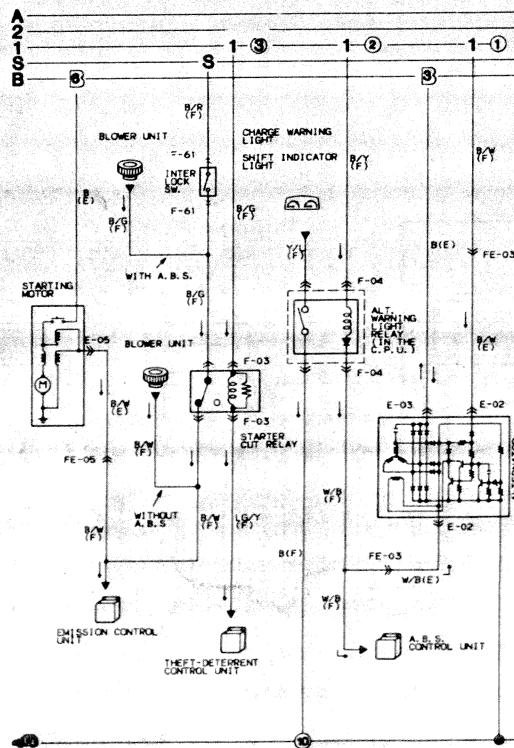
Rear window defroster, power window, cigarette lighter and remote control mirror wiring diagram (1987 shown, 1986 similar)



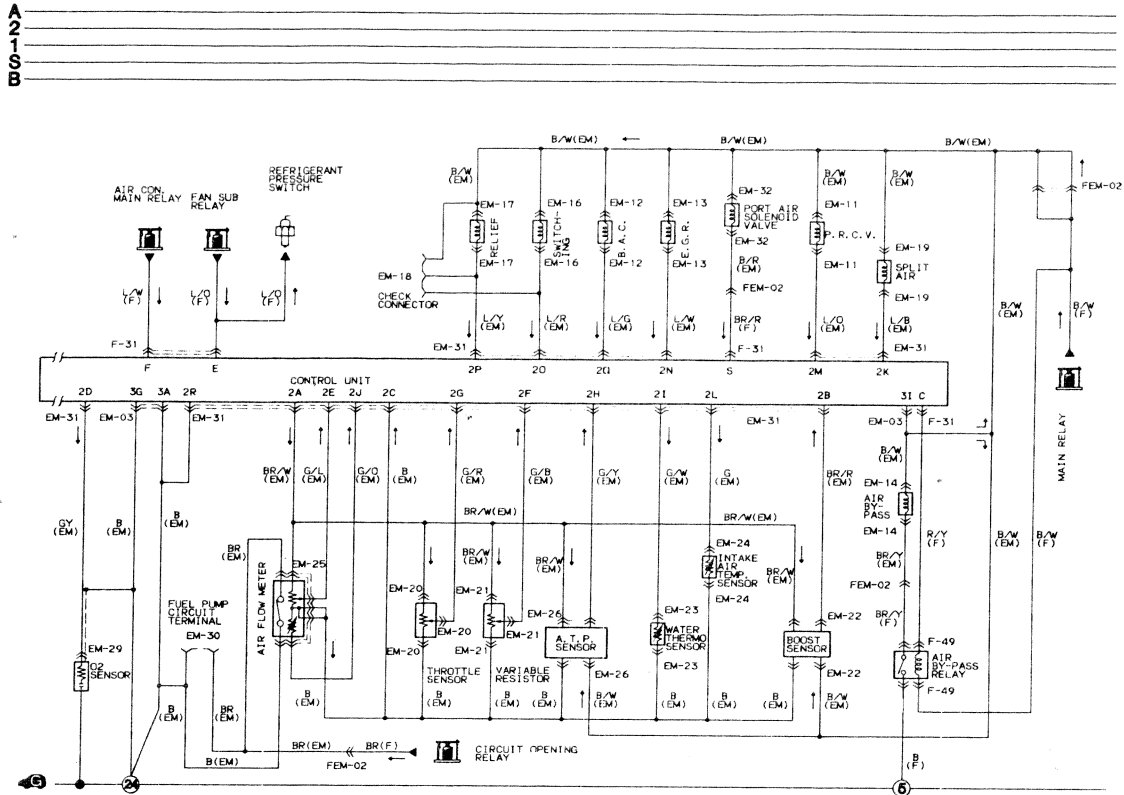
Audio system and power antenna wiring diagram (1987 shown, 1986 similar)



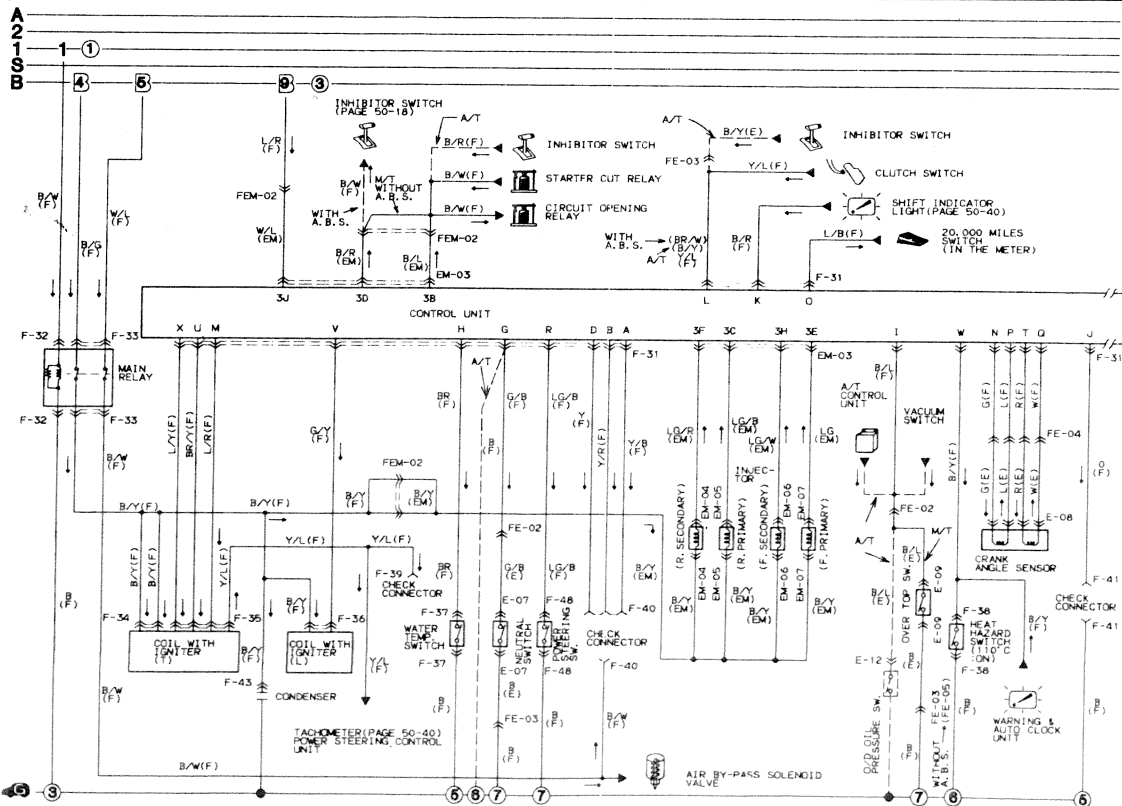
Starting, charging, automatic transmission overdrive and torque converter lockup system (non-turbocharged models) wiring diagram (1988 shown, 1989 and later models similar)



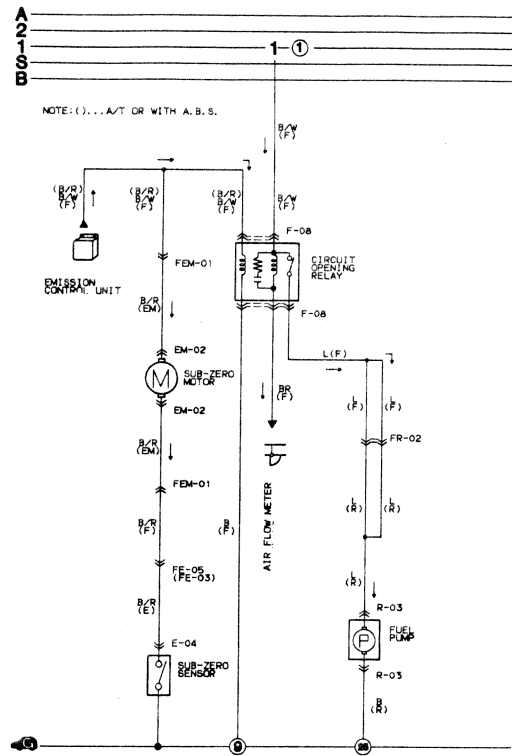
Starting and charging system (turbocharged models) wiring-diagram (1988 shown, 1989 and later models similar)



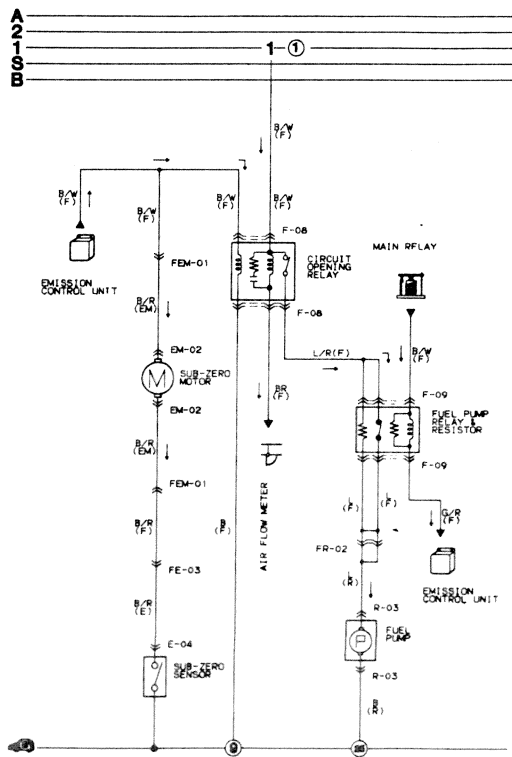
EGI and emission control system (non-turbocharged models) wiring diagram (1988 shown, 1989 and later models similar)



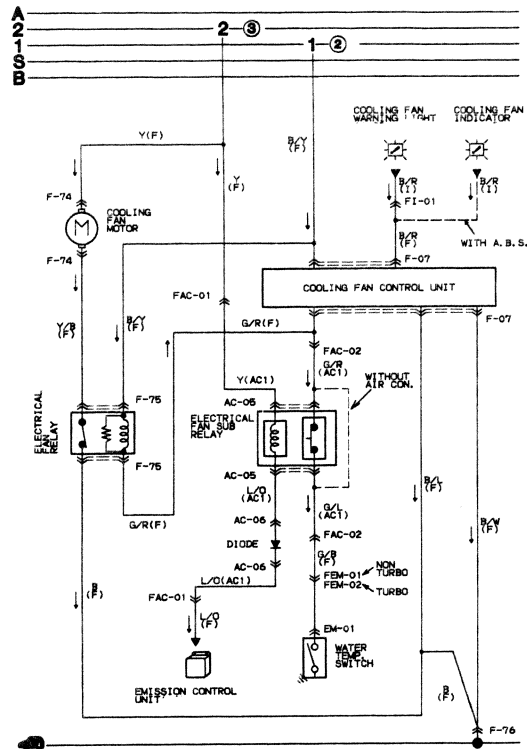
EGI and emission control system (non-turbocharged models) wiring diagram (continued) (1988 shown, 1989 and later models similar)



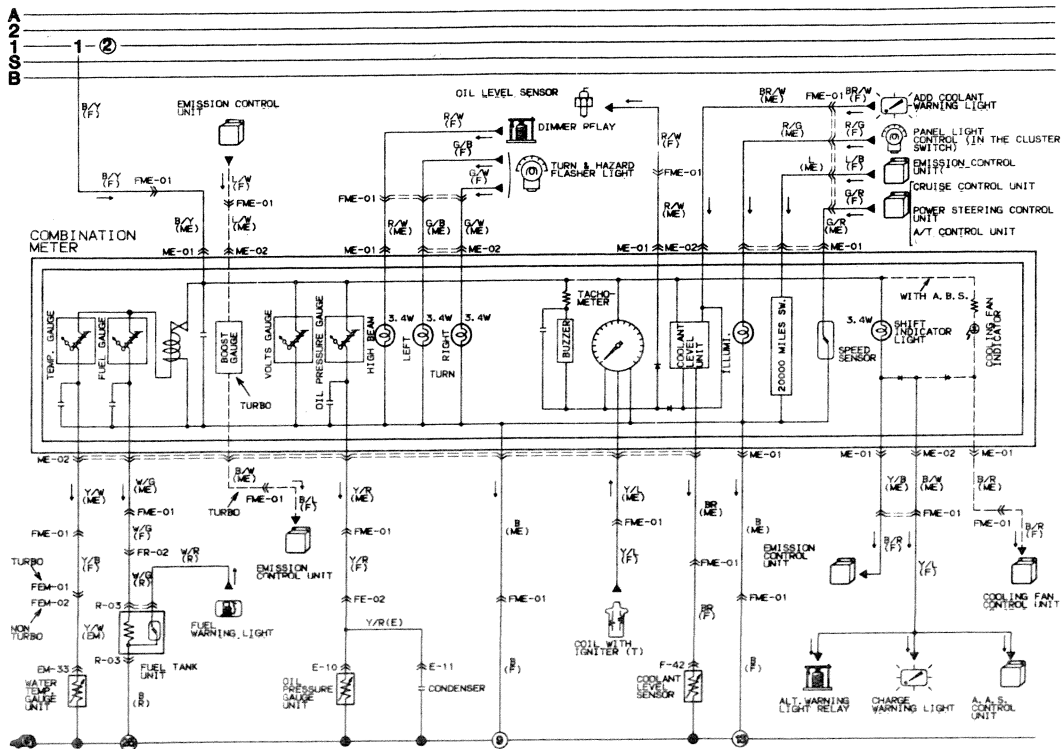
Fuel pump and sub-zero starting system (non-turbocharged models) wiring diagram (1988 shown, 1989 and later models similar)



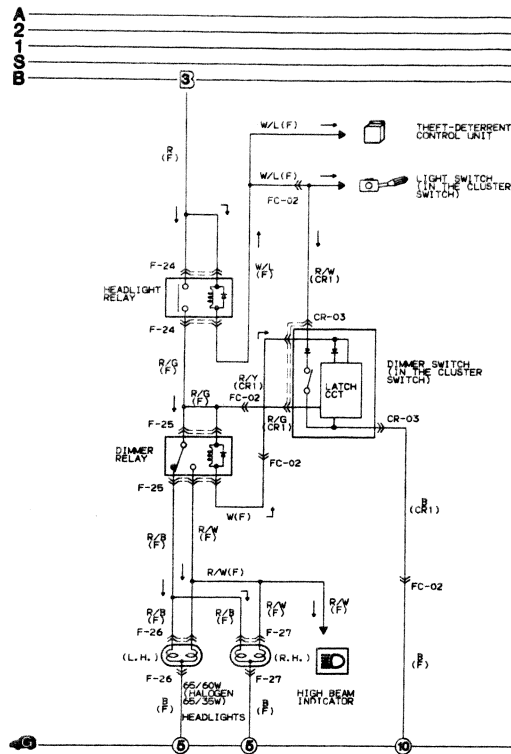
Fuel pump and sub-zero starting system (turbocharged models) wiring diagram (1988 shown, 1989 and later models similar)



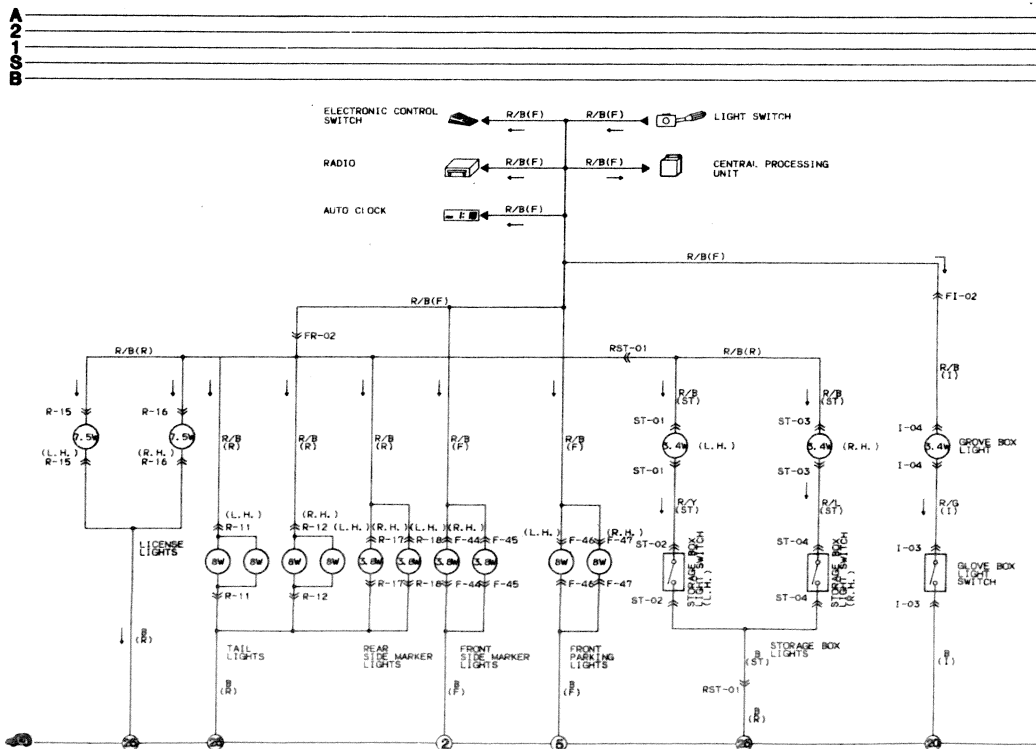
Typical cooling fan system wiring diagram (1988 shown, 1989 and later models similar)



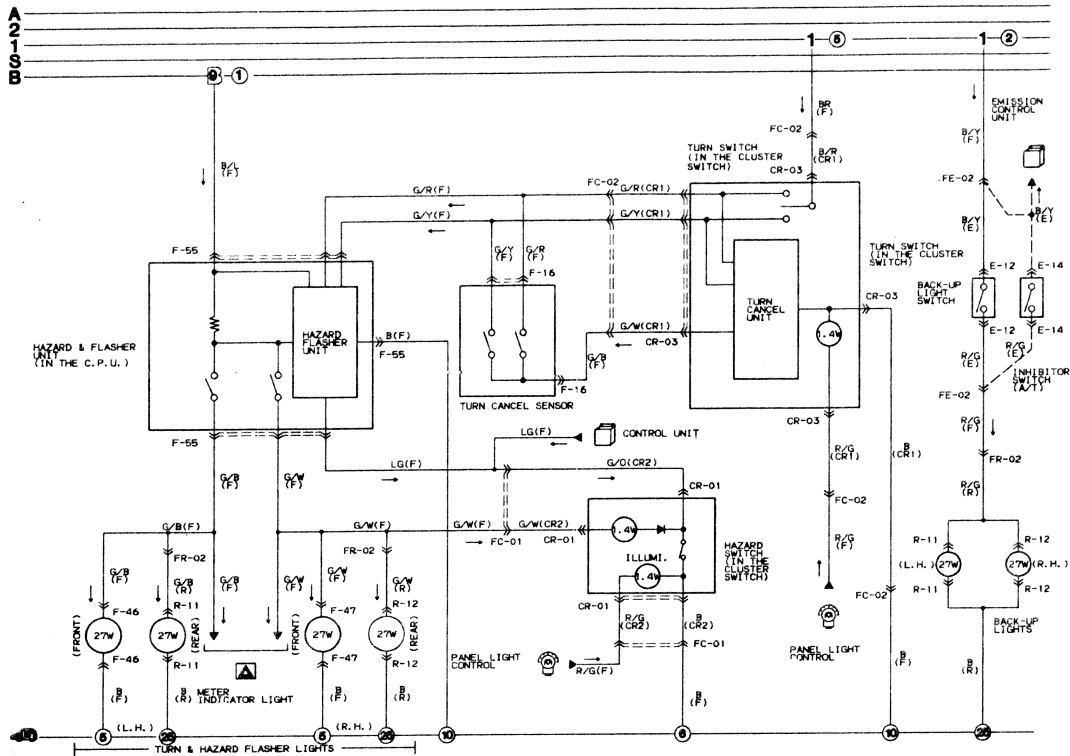
Instrument cluster (combination meter) and warning light system wiring diagram (1988 shown, 1989 and later models similar)



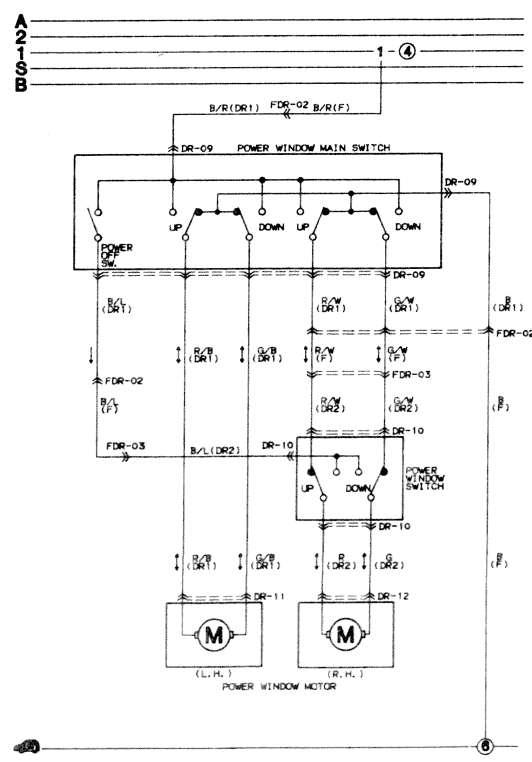
Instrument cluster (combination meter) and warning light system wiring diagram (continued) 1988 shown, 1989 and later models similar



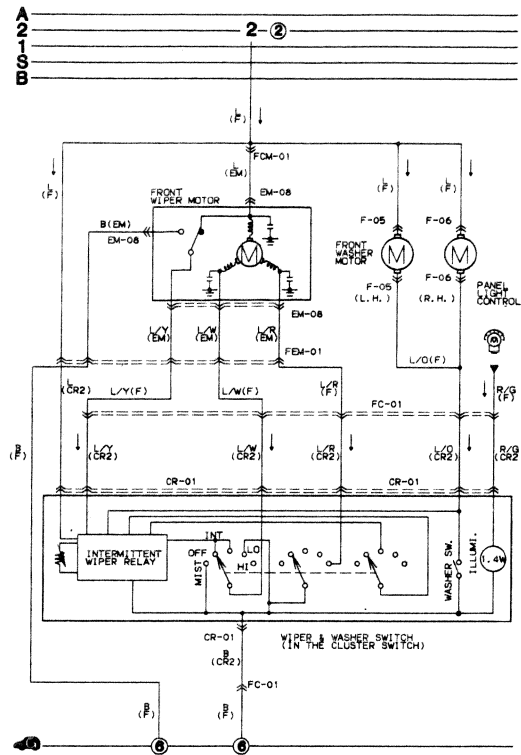
Tail, parking and side marker, license plate, storage box and glove box light system wiring diagram (1988 shown, 1989 and later models similar)



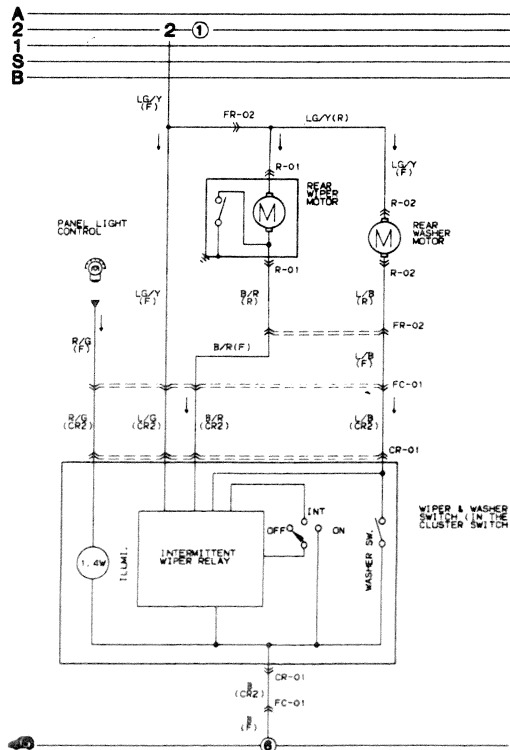
Turn signal, hazard flasher and backup light system wiring diagram (1988 shown, 1989 and later models similar)



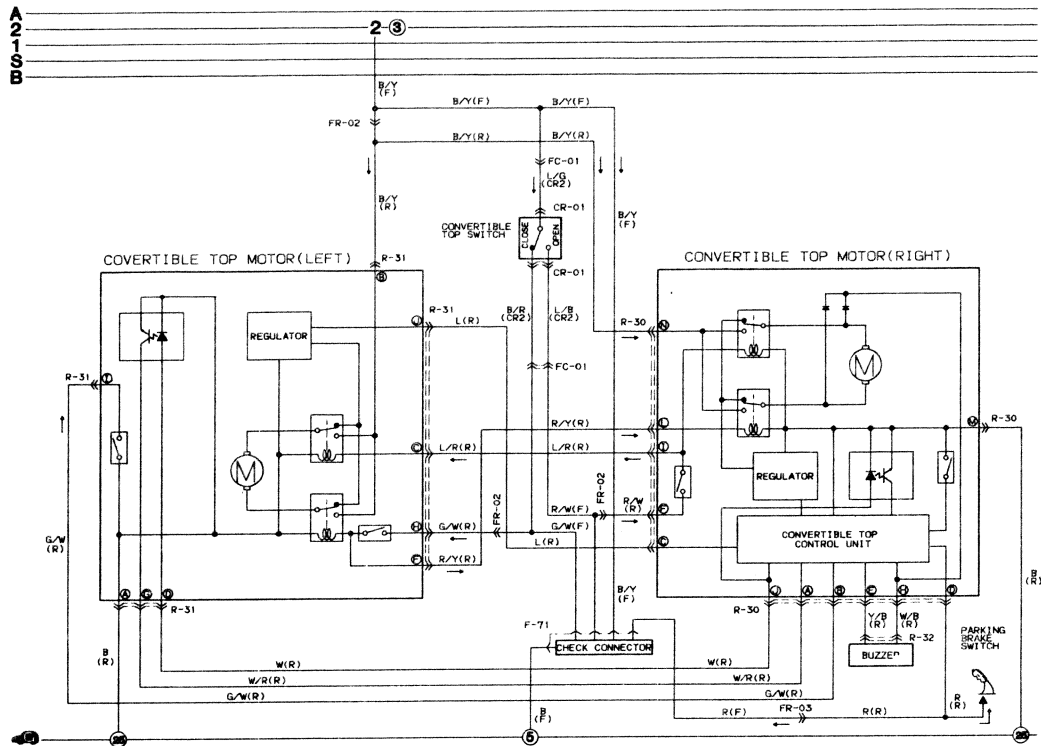
Power window motor system wiring diagram (1988 shown, 1989 and later models similar)



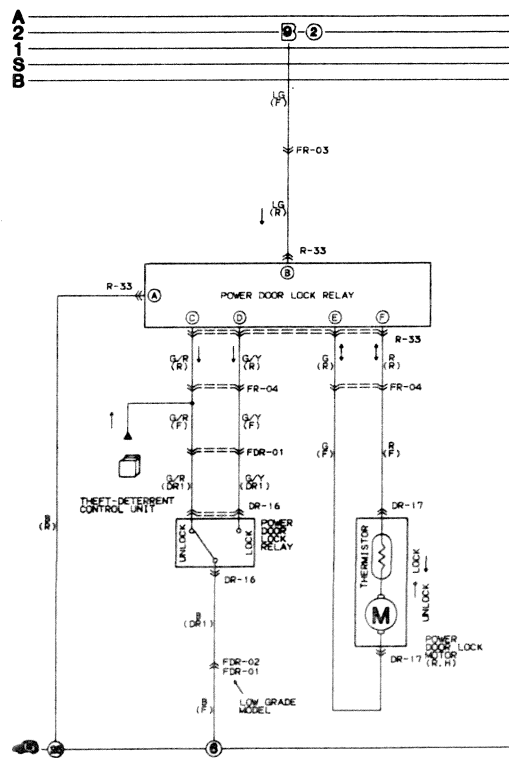
Windshield wiper and washer system wiring diagram (1988 shown, 1989 and later models similar)



Rear window wiper and washer system wiring diagram (1988 shown, 1989 and later models similar)



Convertible top system wiring diagram (1988 shown, 1989 and later models similar)



Power door lock system wiring diagram (1988 shown, 1989 and later models similar)