

CHAPTER ONE

INTRODUCTION

This book provides service information for RX-2's and RX-3's from 1971 through 1977. Changes affecting 1975 and later RX-3's are covered in a supplement at the back of the book. The RX-2 was not produced after 1974.

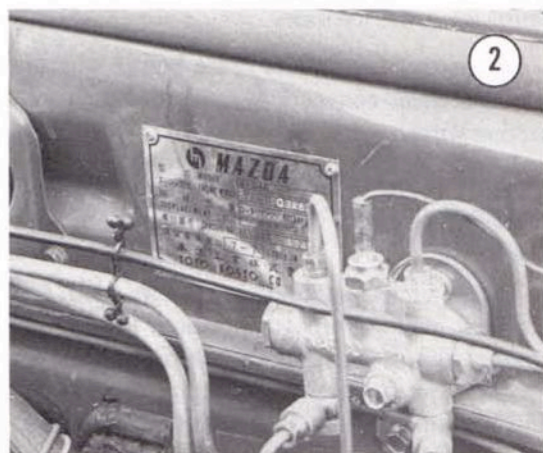
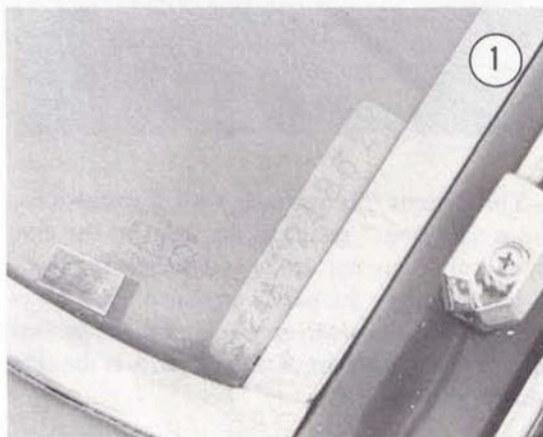
The RX-2 and RX-3 are equipped with a 2-rotor Wankel rotary engine. Total rotor displacement is 70 cu. in. (1146cc). Although the same engine is used in both cars, the RX-2 uses a less restrictive exhaust system, thus has more horsepower.

The standard transmission is a 4-speed manual. A 3-speed automatic is optional. McPherson strut independent front suspension is used at the front wheels. The brakes are vacuum assisted, with discs at the front.

On all U.S. models, the chassis identification number is visible through the driver's side of the windshield (Figure 1). The model identification plate is attached to the cowl (Figure 2). The safety certification label is attached to the left-hand door pillar (Figure 3). Table 1 gives general specifications.

SERVICE HINTS

Observing the following practices will save time, effort, and frustration, as well as preventing possible injury.



pinpoint the trouble. It also discusses equipment useful both for preventive maintenance and troubleshooting.

Subsequent chapters describe specific systems such as the engine, transmission, and electrical system. Each chapter provides complete disassembly, repair, and assembly procedures in a simple step-by-step form. If a repair is impractical for the home mechanic, it is so indicated. It is usually faster and cheaper to take such repairs to a Mazda dealer or other competent repair shop. Specifications concerning a particular system are included at the end of the appropriate chapter.

Some of the procedures in this manual call for special tools. In all such cases, the tool is illustrated, either in actual use or alone. When practical, a low-cost substitute has been suggested. A well-equipped mechanic may find he can substitute other similar tools already on hand, or can fabricate his own. Also, when a procedure requires a special tool, a great deal of time and

expense can be saved by having a dealer or machine shop perform only the step which requires the special tool, but doing the rest of the work yourself.

Table 1 GENERAL SPECIFICATIONS

Height	
RX sedan	56 in.
RX-2 coupe	55 in.
RX-3 sedan	54 in.
RX-3 coupe	53 in.
RX-3 wagon	55 in.
Width	
RX-2	62 in.
RX-3	63 in.
Wheelbase	
RX-2	97 in.
RX-3	91 in.
Track front and rear	51 in.