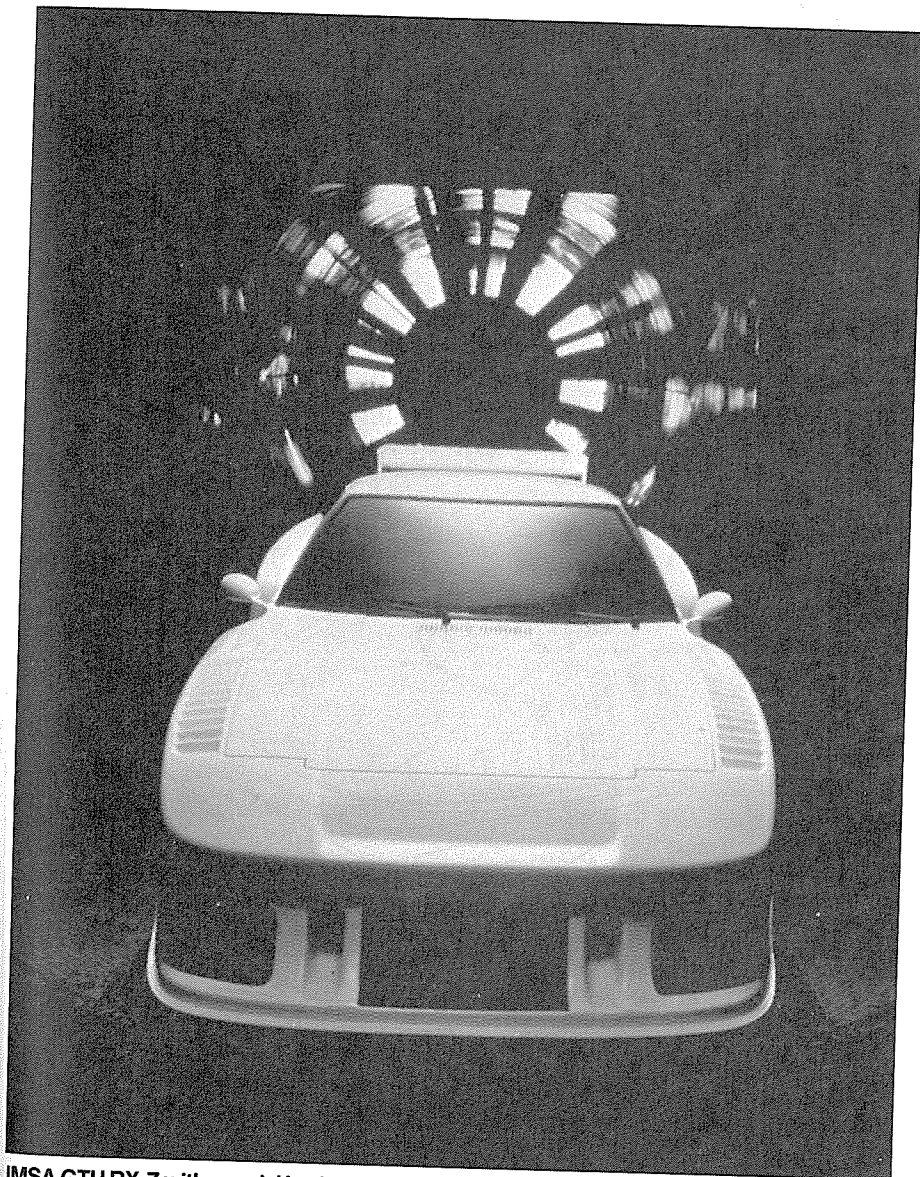


Body Mods



IMSA GTU RX-7 with special body panels and rear wing being tested in factory wind tunnel for lift/downforce, drag and other aerodynamic characteristics. Although not critical for street performance, good aerodynamics is desirable; it's essential for a race car. Photo courtesy *Rotary Rocket* magazine.

The following was reprinted with permission of *Rotary Rocket* magazine from an article that appeared in their September 1986 issue. Thanks!

For subscription information to the RX-7 Club of America magazine, write *Rotary Rocket*, 4020 Palos Verdes Drive North, Suite 108, Rolling Hills Estates, CA 90274. *Rotary Rocket* features the latest pieces for your RX-7.

Tom Monroe

BODY PARTS FOR THE RX-7

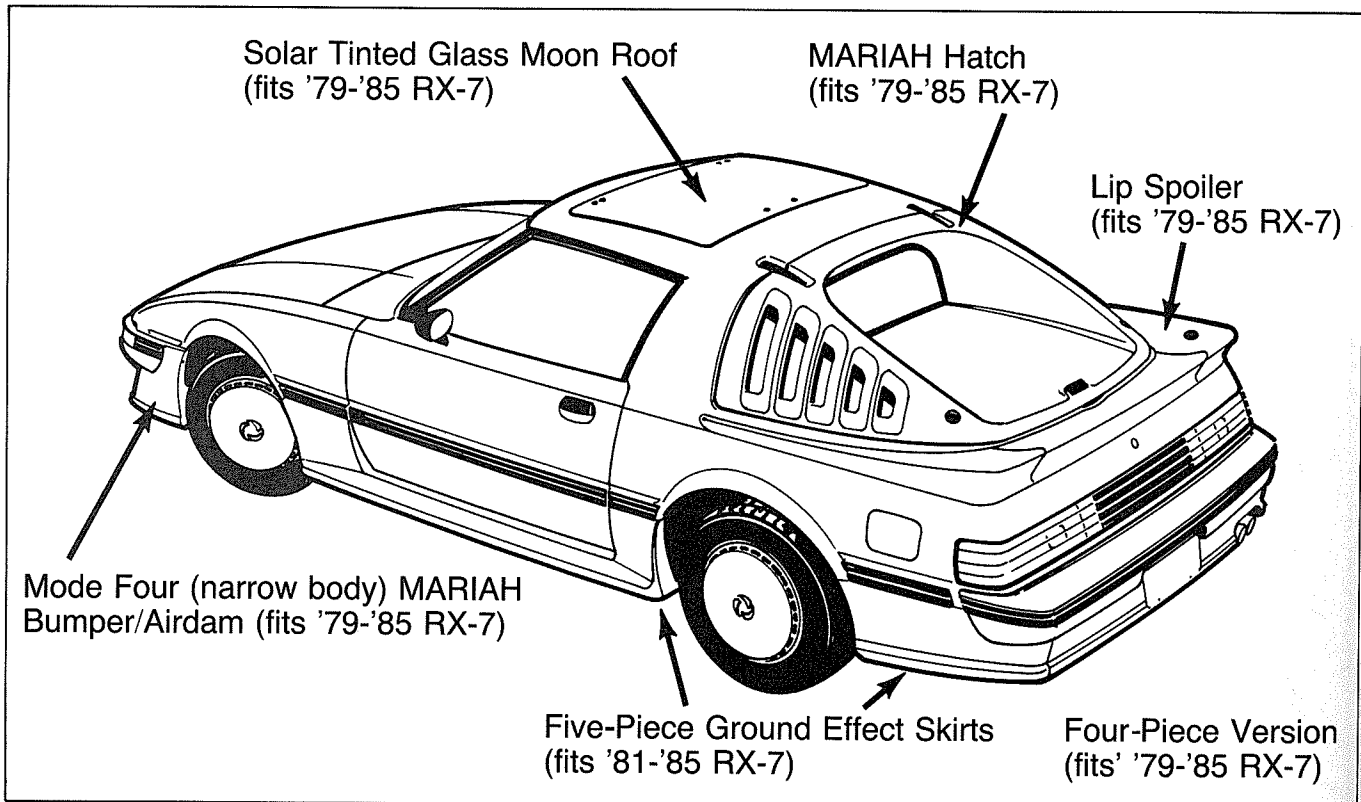
Since its introduction eight years ago, the Mazda RX-7 has been customized in a wide variety of styles. In 1978, when we were preparing the first issue of *Rotary Rocket*, we discovered a beautiful fully customized RX-7 in Garden Grove, California. Back then there were no ready-made body parts or aerodynamic kits for the RX-7 so he had to have all the custom (parts) made of steel at a cost more than exceeding the price he paid for the RX-7.

His RX-7 won numerous awards in car shows and would probably be turning heads today if its owner had not skidded off a slick turn on a mountain road. He and the car tumbled over 100 feet down the slope. Although he emerged with only a few cuts and bruises, that was the end of the world's first fullout custom RX-7. But only the beginning for glamorous customized RX-7s.

The situation has totally changed since the days when you had to roll your own. Now a number of enterprising companies provide a variety of parts and services to make your RX-7 unique in appearance. You can easily add sporty appendages such as body flares, spoilers and whale tails or you can remove parts, such as the top, to make your RX-7 into a convertible. There are individual pieces and complete body packages and some can be mixed and matched. While it took several years for such parts to appear for the original RX-7, 1986 RX-7 owners are luckier. Components are already available to transform your new sports car and



BIS Smartparts kit for RX-7 includes air dam, skirts and rear wing. Parts are by Vestatec of West Germany. Photos courtesy BIS Smartparts.



Mode Four (narrow) body-part kit from Design Energy's Mariah line for 1981—85 (five-piece skirts) or '79—85 (four-piece skirts) RX-7 includes bumper/air dam and ground-effects skirts. Car is also fitted with lip spoiler, louvered hatch and Moon roof. Drawing courtesy Design Energy.

there are even more waiting to make their appearance.

The following illustrates the variety of packages now available and in production. One manufacturer that is missing is Mazda. Their aerodynamic package is

currently being revised and the new design was not finished at press time. Inquire at your local Mazda dealer as to when the package will be available.

Note that the firms represented also sell a wide range of other accessories for

the RX-7. They can enhance your interior or further customize your new body with a wide range of wheels and tires. Contact them at the addresses given for pricing information and additional details on their RX-7 components.

Mariah
bump
also e
glass,
cludes
suspe
Design

Mariah
brake-c

AUTO-PLAS

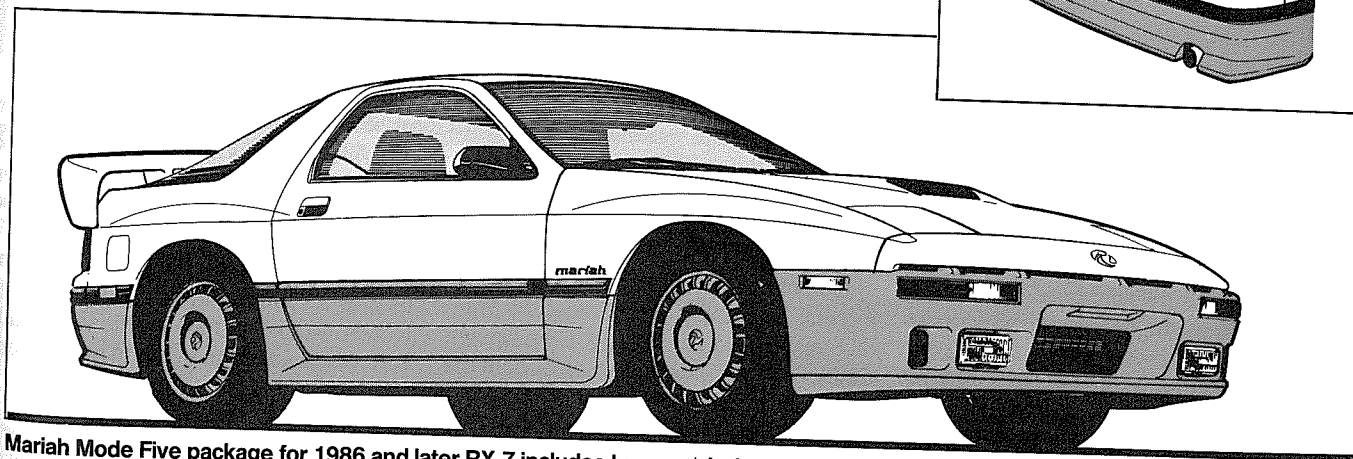
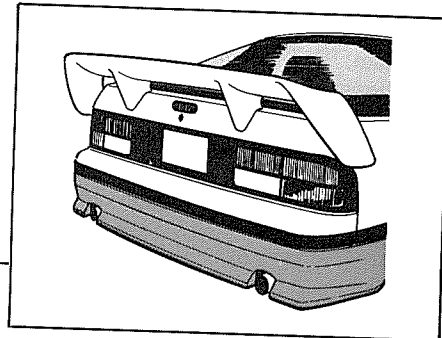
Auto Plas is a major source of rear-window louvers for the RX-7. They also manufacture an IMSA-style rear tail for 1979—1985 RX-7s that is a perfect mate for their louvers. The tail is made of polyurethane foam with a black matte finish. The tail fits over the antenna and is easily attached with three screws which fasten the tail to the bodywork.

AUTOTRIX

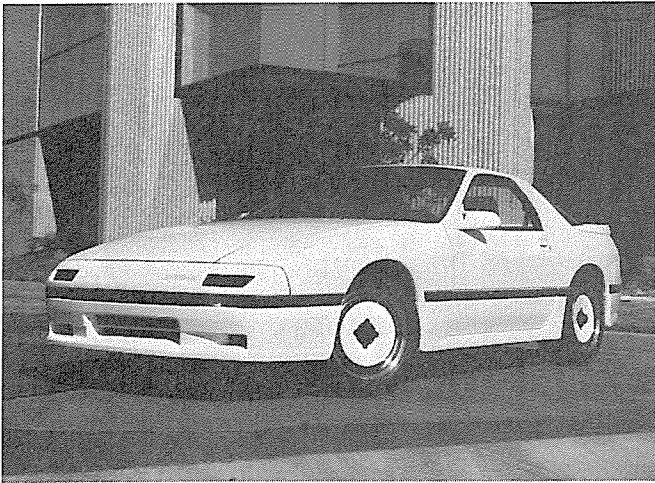
Autotrix carries a very wide range of aerodynamic aids and body conversion kits for 1979 through 1986 RX-7s, including those made by Design Energy, Kaminari, Pacific T-Top, Vestatec, Kent Racing and Trans-Acc. Autotrix also is an authorized installation center.



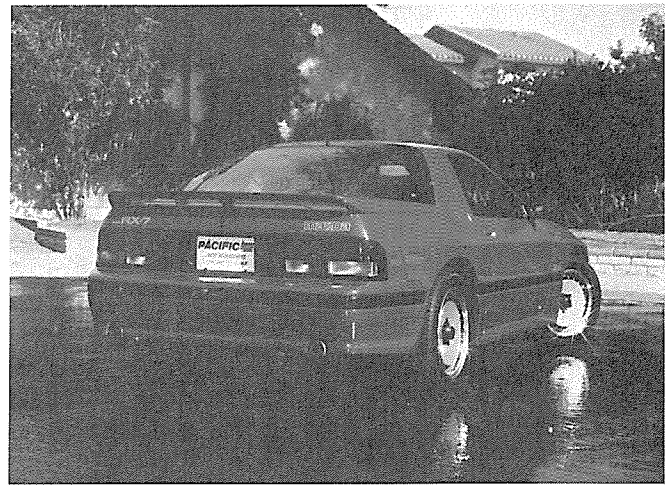
Mariah Mode One (wide) body-parts kit for 1979—85 RX-7 includes bumper/air dam, bumper reinforcement bar, fender flares and splash shields for inner front fenders. Car is also equipped with driving lights, hood with integral NACA ducts, wind deflectors over side glass, louvered hatch, whale-tail spoiler and Moon roof. Complete conversion also includes 225/50 and 245/50VR-15 tires on Gotti wheels, Koni and Suspension Techniques suspension components and modified engine which produces 180 HP. Photo courtesy Design Energy.



Mariah Mode Five package for 1986 and later RX-7 includes bumper/air dam assembly, skirts and rear airfoil. Not shown are functional brake-cooling inlets and underpan spoilers. Drawings courtesy Design Energy.



1986 RX-7 fitted with Pacific T-Top's aero kit in monochromatic paint scheme. Photo courtesy Pacific T-Top, Inc.



Rear view of Pacific T-Top aero-kit equipped '86 RX-7 shows lip spoiler and polished wheels. Photo courtesy Pacific T-Top, Inc.

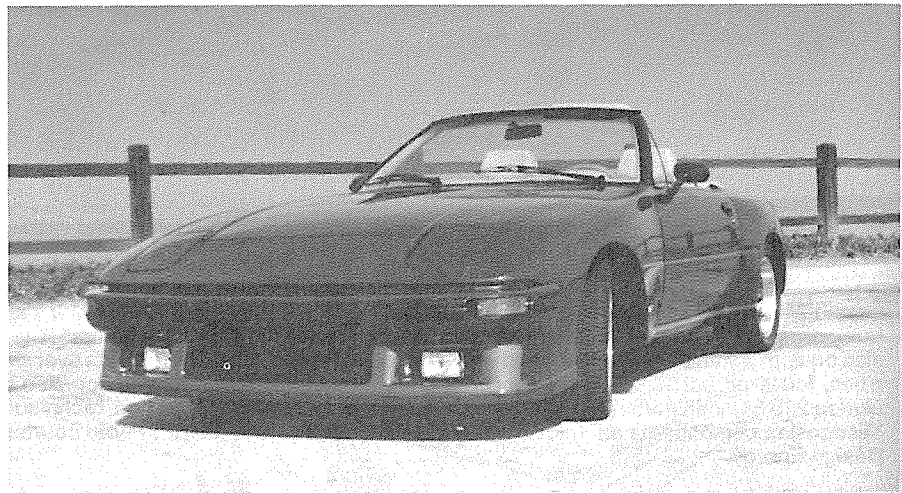
BIS SMARTPARTS

This is a West German design by Vestatec for the RX-7, originally designed and built for Mazda of Switzerland. The kit consists of a front air dam, four-piece side-skirt set and a rear wing. The construction method is RIM-urethane, the same process used for the Porsche 928 rear bumper system, which features a built-in memory to restore the shape after impact. The air dam and skirts are fully warranted against breakage, such as when parking a car against a high curb, or splitting from the impact of a flying stone. The pieces are easily painted in your choice of colors. Call or write BIS for the name of a dealer near you.

DESIGN ENERGY

Long-time readers of Rotary Rocket are very familiar with the Mariah line of RX-7 body parts. The Ultima project car of the RX-7 Club of America sported Mariah body components. While their body parts dramatically change the visual appearance of 1979—1985 RX-7s, Design Energy also concentrates on improving the actual aerodynamics of the car as discussed in Tech Line this issue.

Their fiberglass line includes a bumper/airdam, a rear lip spoiler, a flying whaletail and a NACA hood scoop. The parts can be obtained individually or as part of the Mariah Wide Body Pack-



How about an IMSA convertible? RX-7 Club's project car, the Ultima, was done by Pacific Avatar. Photo courtesy Rotary Rocket magazine.

age. And all members of the RX-7 Club of America qualify for substantial discounts on these aerodynamic components.

Owners of 1986 RX-7s should not feel left out. They can now purchase the Mazda Finish Line aero package from Design Energy. At their design studios, concept drawings depict a totally redefined 1986 RX-7. It will give the new RX-7 a dynamic wedge shape with a significant change to the front-end styling and yield

a significantly wider look. It will be available only as a "turn-key" package designed to turn the RX-7 into a high-end exotic car which will appeal to the GT driver who demands the likes of a Countach or a Testarossa. Sound interesting? Rotary Rocket will provide the details and pictures as soon as it is in production.

KAMINARI

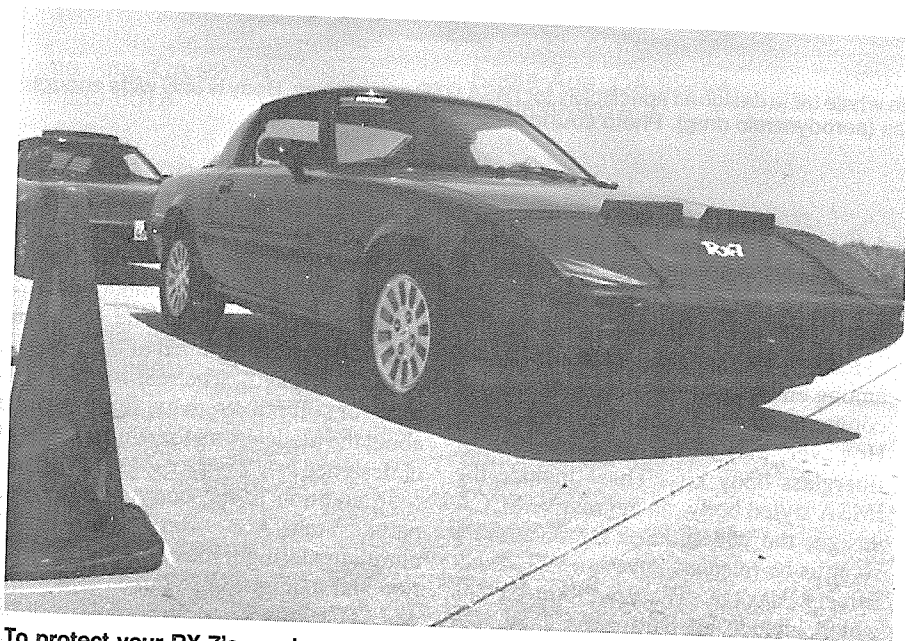
This company has been around for a long time with body packages for other

More to
Rocket

To protect
Photo co



More traditional is this convertible conversion by Pacific Avatar. Photo courtesy *Rotary Rocket* magazine.



To protect your RX-7's precious nose from flying stones, consider fitting it with a bra. Photo courtesy *Rotary Rocket* magazine.

sports cars. Somehow, they never got around to doing an RX-7 package but that has definitely changed. The beautiful result of their work is pictured on the cover of this issue. Their bolt-on component package for the new RX-7 includes a Euro-tek louvered airdam, full-length sideskirts and a complete wrap-around rear skirt with dual exhaust outlets. Their aero components are constructed of three-ply hand-laminated fiberglass and allowed to slow cure. In fact, they build only one part per day per mold to allow distortion free curing time. They also offer complete installation and high-quality paint work.

If you own an earlier model RX-7, you'll be pleased to know that Kaminari is now completing a body design for your cars and it should be ready soon.

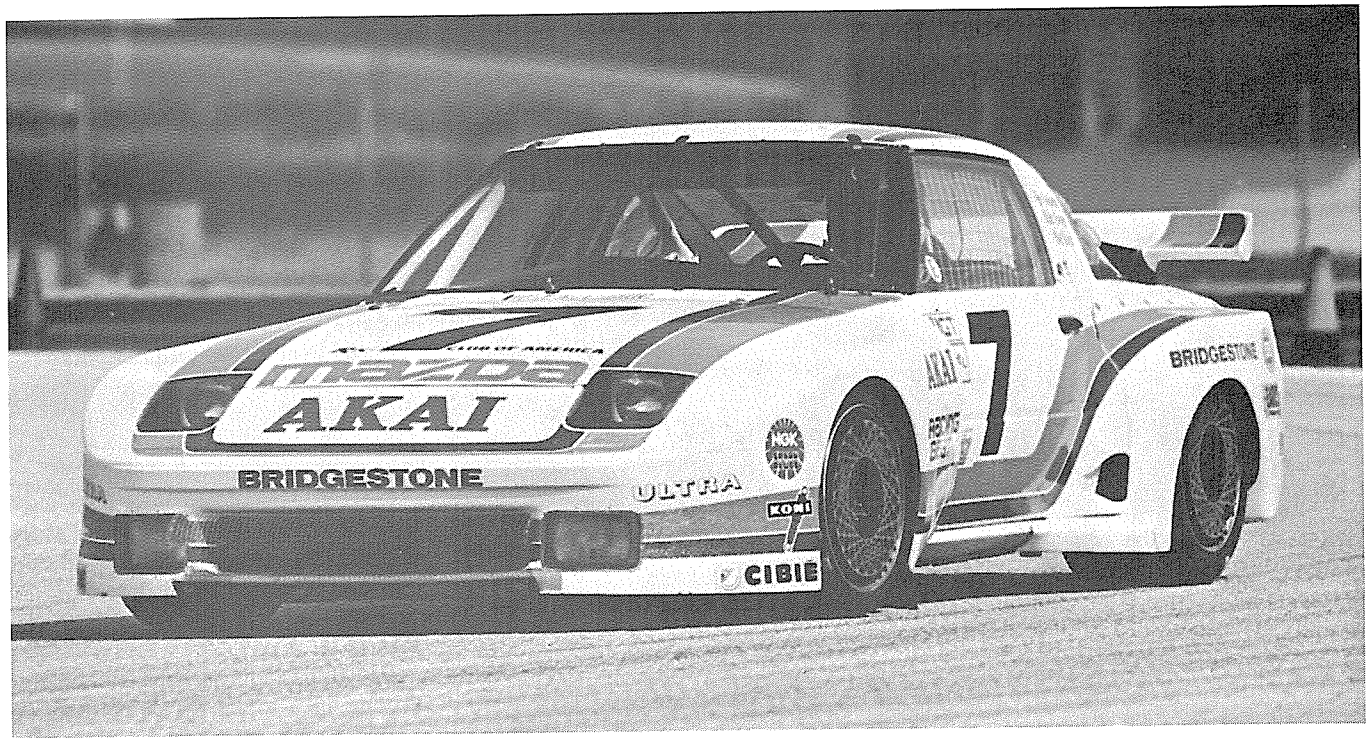
PACIFIC AVATAR

Few things approach the excitement of driving in a top-down convertible, especially when it's based on an RX-7. Pacific Avatar has been turning RX-7s into convertibles since 1980, continuously evolving and improving the design during that period. Their convertibles have been featured in numerous magazines and films over the past six years and they performed the convertible conversion on the RX-7 Club's project car, the Ultima.

In addition to removing the top, they extensively rework the interior frame, beefing it up and adding bracing to prevent chassis flex. Pacific Avatar also offers a wide range of custom interior, exterior and performance options to personalize each convertible. They will convert any 1979—1985 RX-7 in good mechanical shape and are completing their '86 convertible design.

PACIFIC T-TOP

Pacific T-Top has been specializing in the Mazda RX-7 since its introduction. Following the success of their first product, the RX-7 glass moonroof, they realized that many owners wanted to give their RX-7s a more aggressive racing look. Initially, they designed a fiberglass IMSA body which they used on their project cars. It was later made available as a five-piece package for 1979—1980



Pure function, Racing Beat's wide-body kit with whale tail is designed specifically for IMSA GTO competition. Body is only wide enough to cover tires to minimize increase in frontal area (aerodynamic drag). Photo courtesy Racing Beat.

RX-7s and a seven-piece kit for 1981 through 1985 models. The kit contains a front spoiler with bolt-on front and rear fenders that are molded into the car. They also have a rear whale-tail spoiler that is available separately.

The latest in the lineage is the striking new body package for the 1986 RX-7 pictured here. It can be easily installed at any competent body shop and will radically transform the appearance of the RX-7.

RACING BEAT

Racing Beat offers a wide selection of fiberglass parts for race applications as well as both fiberglass and urethane parts for street applications. The race group includes IMSA approved GTU front air dams, front and rear fenders, doors, bumpers, spoiler and hood. For IMSA GTO they make a complete front nose with fenders and a spoiler.

For street applications, they have a number of choices from Creative Car Products, RGA Design, Vestatec and Pacific Auto Accessories. Send \$5.00 for

their catalog of body parts and an extensive selection of performance products.

ROTARY ENGINEERING

Rotary Engineering is well known among enthusiasts for their performance components and engine packages. However, they sell an extensive line of fiberglass body kits. These include the IMSA styled body, an aggressive SCCA design, the wide-bodied IMAGE and a soon-to-be-released Phantom IV Ground Effects Package. These are bolt-on kits which include all hardware. They also have a low-profile whale tail, a flying whale tail, and a NACA duct hood scoop. Their newest body components are Superdam air dams, side skirts and a rear spoiler, made in Germany, which are very strong yet resilient to prevent the damage that can result from high curbs and impacts.

TRANS-ACC INC.

R.G.A. Design has developed and manufactured aerodynamic products for the famed British RX-7 specialists Elford

and Tom Walkinshaw Racing. Trans-Acc now offers these European designs for 1979 through 1985 model RX-7s. The front spoiler, laser side skirts and rear skirts are constructed of high-impact ABS for strength. The rear lip spoiler is made of soft polyurethane foam. Inquire about the model years for which each part is designed.

In addition to the body aerodynamic parts, Trans-Acc offers 1981—1985 aluminum taillight louvers to add protection and a unique appearance to the rear end. The louvers are coated in a black chip-resistant paint but can be painted to match the car's color. Also available is an archguard made of tough PVC to protect both the underside and outside paint of the fender area.

VENTRE

Ventre makes a spoiler, air dam and a targa band for 1979 to 1985 RX-7s. These components are available as a package or separately.

S
MA
Aut
50
Fre
516
Maz
491
Atla
404
Rac
129
Ana
714
Rot
578
Gol
805
Rot
264
San
714
CAF
FUE
Barr
(Hol
Rou
Dah
404/
Bo L
1015
Orla
305/
Dello
Rivie
7928
Whit
213/
Holle
1195
Warr
313/
Web
Redl
1970
Torra
213/5

SUSPENSION COMPONENTS

Addco Industries

Watertown Road
Lake Park, FL 33403
305/844-2531

Autotrix

50 East Merrick Road.
Freeport, NY 11520
516/379-8661

Bilstein Corporation

11760 Sorrento Valley Road
San Diego, CA 92121
619/453-7723

BOGE of America

3658 Atlanta Industrial Dr., NW
Atlanta, GA 30331
404/699-1131

Carrera Shocks

5412 New Peachtree Rd.
Atlanta, GA 30341
404/451-8811

Koni of America

111 W. Lovers Lane
Culpeper, VA 22701
703/825-4543

KYB Corporation

901 Oak Creek Drive
Lombard, IL 60148
312/620-5555

Mazmart

4917 New Peachtree Road
Atlanta, GA 30341
404/455-4848

Pace-Setter Inc.

200 E. Slauson Ave.
Los Angeles, CA 90011
213/233-0207

Quickor Engineering

6710 SW Illth Ave.
Beaverton, OR 97005
503/646-9696

Racing Beat

1291 Hancock Street
Anaheim, CA 92807
714/779-8677

Rotary Engineering

5785 Thornwood Dr.
Goleta, CA 93117
805/683-3784

Rotary Reliability and Racing

2640 S. Harbor Blvd.
Santa Ana, CA 92704
714/839-8018

Suspension Techniques

1853 Belcrott Ave.
S. El Monte, CA 91733
818/442-7382

Tokico of America

3555 W. Lomita Blvd.
Torrance, CA 90505
213/534-3300

TMC (Traction Master Corp.)

2917 W. Olympic Blvd.
Los Angeles, CA 90006
213/382-1131

BODY PARTS

Auto-Plas America

4 McLaren, Suite C
Irvine, CA 92718
714/855-3799

Autotrix

50 East Merrick Road.
Freeport, NY 11520
516/379-8661

BIS Smartparts

11 Business Park Drive
Branford, CT 06405
203/488-6569

Design Energy

414 N. Salsipuedes
Santa Barbara, CA 93103
805/965-5115

Kaminari Design

515D West Lambert Road
Brea, CA 92621
714/529-6399

Pacific Avatar

12797 Newhope
Garden Grove, CA 92640
714/636-6743

Pacific T-Top

15241 Transistor Lane
Huntington Beach, CA 92649
714/891-3669

Racing Beat

1291 Hancock Street
Anaheim, CA 92807
714/779-8677

Rotary Engineering

5785 Thornwood Dr.
Goleta, CA 93117
805/683-3784

Trans-Acc Inc.

21807 Plummer St.
Chatsworth, CA 91311
818/709-1020

Ventre

28149 Kehrig Drive Mt.
Clemens, MI 48045
313/949-2160

MAZDA COMPETITION PARTS ARE SOLD "AS IS" AND WITHOUT WARRANTY OF ANY KIND. ALL IMPLIED WARRANTIES, INCLUDING ALL WARRANTIES OF MERCHANTABILITY OR FITNESS FOR A PARTICULAR PURPOSE, ARE HEREBY DISCLAIMED. Purchaser acknowledges that no representations have been made to him regarding these parts, including, but not limited to, any representations as to their quality or performance, and that he shall be responsible for and bear all costs of repair or replacement of any defect in or failure of these parts.

Purchaser acknowledges that installation of these parts may cause his vehicle to be unable to be lawfully used on public highways, and assumes all risks and expenses thereof.

PARTS LIST

The following Mazda Competition Parts are available from Mazmart and Racing Beat.

PART NUMBER	MODEL	DESCRIPTION	QUANTITY
ENGINE			
4352-02-000	12A	Long Engine	1
4801-02-000	13B	Long Engine	1
4352-23-200	12A	Short Engine	1
4801-23-200	13B	Short Engine	1
4352-10-100	12A	Rotor Housing	2
4801-10-100	13B	Rotor Housing	2
8871-10-200A	12A/13B	Front Housing	1
8871-23-070	12A/13B	Intermediate Housing	1
8871-23-095	12A/13B	Rear Housing	1
4352-10-451A	12A	Tension Bolt	16
4801-10-451	13B	Tension Bolt	16
4352-10-500A	12A	Stationary Gear, Frt.	1
4352-10-550A	12A	Stationary Gear, Rr.	1
4801-10-500	13B	Stationary Gear, Frt.	1
4801-10-550	13B	Stationary Gear, Rr.	1
4801-10-502	12A/13B	Main Bearing, Rr.	1
1058-78-135	12A/13B	Rotor Bearing	2
4801-11-111	12A/13B	Rotor Bearing	2
4801-10-600A	12A/13B	Dry-Sump Front Cover	1
9954-20-8501	12A/13B	O-Ring, Dry Sump	1
4352-10-700A	12A	Oil Pan, Wet Sump	1
4352-10-701A	12A	Oil Pan, Dry Sump	1
4352-10-709	12A	Baffle Plate	1
4801-10-701	13B	Oil Pan, Dry Sump	1
4352-11-010	12A	Balance-Weight Set	1
4801-11-010	13B	Balance-Weight Set	1
4352-11-100	12A	Rotor	2
4801-78-130	13B	Rotor	2
4352-11-301	12A	Apex Seal	6
4352-11-304	13B	Apex-Seal Spring	6
4801-11-301	13B	Apex Seal	6
4801-11-304	13B	Apex-Seal Spring	6
1011-11-321	12A/13B	Corner Seal	12
4352-11-353	12A/13B	Oil-Seal Spring, Frt. Outer	2
4352-11-363	12A/13B	Oil-Seal Spring, Rr. Outer	2
4352-11-400	12A	Eccentric Shaft	1
4801-11-400	13B	Eccentric Shaft	1
4352-11-521	12A/13B	Drive Gear, Dry Sump	1
3997-11-601	12A/13B	Drive Pulley	1
4352-11-601	12A/13B	Drive Pulley	1
4352-11-752A	12A/13B	Bottom Mount Flywheel	1
4801-11-752A	Camel Lights	Top Mount Flywheel	1
9978-11-025	12A/13B	Flywheel Bolt	6
0839-78-155	Common	Spacer (L = 8.02mm)	1
0839-78-157	Common	Spacer (L = 8.04mm)	1
0839-78-158	Common	Spacer (L = 8.00mm)	1
0822-78-184	12A/13B	Thrust Bearing	2
1058-78-187	12A	Spacer	1
0820-10-556B	12A/13B	Oil Seal, Rr.	1
1708-99-100F	12A	Engine Gasket Set	1
4352-39-040	RX-7	Engine Mount	2
INTAKE & EXHAUST			
4352-13-100	12A	Intake Manifold	1
4801-13-100	13B	Intake Manifold	1
0862-78-205	Common	O-Ring, Intake Manifold	2
0862-78-206	Common	Carburetor Gasket	2
0839-78-240	Common	Carburetor Support	2
0839-78-298	Common	Exhaust Gasket	2
4352-78-250	Common	Exhaust Header	1
4352-78-257	RX-7	Holder	1
4352-78-260	RX-7	Exhaust Pipe	1
4352-78-267	RX-7	Bolt	1

PART NUMBER MODEL DESCRIPTION QUANTITY

ELECTRICAL EQUIPMENT

4801-18-200	Common	Distributor	1
4801-18-361	Common	Alternator Strap	1
3922-18-381	Common	V-Belt	1
4352-18-401	RX-7	Starter Support	1
0833-78-153	Early	Alternator Pulley	1
	Common		
0833-78-153A	Early	Alternator Pulley	1
	Common		
1058-78-171	Early	Point Set	1 or 2
	Common		
1058-78-172	Early	Alternator Strap	1
	Common		
1058-78-173	Early	Distributor Shaft	1
	Common		
4352-78-277	RX-7	Spacer	3
4352-78-285	Common	Exhaust-Pipe Hanger	3
4352-78-288	RX-7	Bracket	2
4352-78-289	Common	Washer	4
4352-78-295	RX-7	Exhaust-Pipe Bracket	1
4352-41-130	RX-7	Throttle Cable	1
0000-06-404	Common	Silencer	1

LUBRICATION & COOLING

1058-78-220B	Common	Oil-Pump Assembly	1
4352-14-250	Common	Oil-Pump Regulator, Wet Sump	1
4801-14-250	Common	Oil-Pump Regulator, Dry Sump	1
4352-14-410	Common	Suction Pipe, Right, Dry Sump	1
4352-14-420	Common	Suction Pipe, Left, Dry Sump	1
4801-14-433	Common	O-Ring, Suction Pipe	2
4801-14-713	Common	Oil Strainer	2
4352-14-720	RX-7	Oil Hose	1
4352-14-730	RX-7	Oil Hose	1
4801-14-730	13B	Oil Pipe, Dry Sump	1
4352-14-993	Common	Fitting, Dry-Sump Cover	2
3997-15-010B	Early	Water Pump, Cast Iron	1
	Common		
1058-78-193	Early	Water-Pump Pulley	1
	Common		
4801-15-010	12A/13B	Water Pump, Aluminum	1
4801-15-130	Common	Water-Pump Cover, Fuel Inj.	1
4801-15-132	Common	Water-Pump Gasket, Fuel Inj.	1
4801-15-151	12A/13B	Water-Pump Pulley, Fuel Inj.	1
1058-78-180	Common	Oil Cooler	1
1058-78-190	Common	Radiator	1

CLUTCH & TRANSMISSION

4352-16-214	RX-7	Dust Cover	1
4352-16-220A	RX-7	Front Cover	1
4352-16-225	RX-7	Front-Cover Gasket	1
4352-16-225A	RX-7	Front-Cover Gasket	1
4352-16-410	RX-7	Clutch Pressure Plate	1
D501-16-460	RX-7	Clutch Disc	1
4352-16-460	RX-7	Clutch Disc	1
4352-16-520A	RX-7	Clutch Fork	1
8570-03-000	RX-7	Transmission, Overdrive	1
MANA-17-000	RX-7	Transmission, Changeable Gears	1
F501-79-810	GLC	Transmission	1
MGLC-17-000	GLC	Transmission, Changeable Gears	1

PART NUMBER	MODEL	DESCRIPTION	QUANTITY	PART NUMBER	MODEL	DESCRIPTION	QUANTITY	PART N
M323-17-000	323	Transmission, Changeable Gears	1	MANA-17-F3232	RX-7	Final Gear, 32/32	1	4352-27
M626-17-000	626	Transmission, Changeable Gears	1	MANA-17-03233	RX-7	Gear Set, 32/33	1	4352-27
8570-03-000	RX-7	Transmission, Overdrive	1	MANA-17-102	RX-7	Tail-Shaft Housing	1	0540-27
4352-17-100B	RX-7	Transmission Case	1	MANA-17-2021	RX-7	Hub, 2-3 & 4-5	2	1391-33
4352-17-201	RX-7	Main-Drive Gear	1	MANA-17-2022	RX-7	Hub 1-R	1	1391-33
4352-17-221	RX-7	Main Shaft	1	MANA-17-2036	RX-7	Spacer	1	4352-33
4352-17-231	RX-7	3rd Gear	1	MANA-17-2041	RX-7	1-2 Bearing Sleeve	1	4352-33
4352-17-241	RX-7	Clutch Hub	1	MANA-17-2042	RX-7	3-4 Bearing Sleeve	1	0820-79
4352-17-243	RX-7	Synchronize Key	6	MANA-17-2043	RX-7	5 Bearing Sleeve	1	0221-79
4352-17-244	RX-7	Synchronize-Key Spring	4	MANA-17-2054	RX-7	Washer	1	0221-79
4352-17-245	RX-7	Synchronize Ring	4	MANA-17-2055	RX-7	Coupling	1	0221-79
4352-17-251	RX-7	2nd Gear	1	MANA-17-2062	RX-7	1st Motion Shaft	1	0820-79
4352-17-261	RX-7	Clutch Hub	1	MANA-17-2063	RX-7	Countershaft	1	0221-79
4352-17-262	RX-7	Clutch-Hub Sleeve	2	MANA-17-2071	RX-7	Reverse-Drive Gear	1	0221-79
4352-17-271	RX-7	1st Gear	1	MANA-17-2072	RX-7	Reverse Idler	1	
4352-17-281	RX-7	Reverse Gear	1	MANA-17-2073	RX-7	Reverse-Drive Gear	1	
4352-17-297	RX-7	Bearing, Countershaft, Frt.	1	MANA-17-2074	RX-7	Idler Shaft	1	
4352-17-301B	RX-7	Countershaft Gear	1	MANA-17-2122	RX-7	Input-Shaft Retainer	1	4352-26-
4352-17-308A	RX-7	Counter Gear, Over Top 0.839	1	MANA-17-3031A	RX-7	Shift Fork, 1-R	1	4352-26-
8868-17-308	RX-7	Counter Gear, Over Top, 0.881	1	MANA-17-3032A	RX-7	Shift Fork, 2-3	1	4352-26-
M501-17-309	RX-7	Locknut, Countershaft	1	MANA-17-3033A	RX-7	Shift Fork 4-5	1	3514-26-
4352-17-313A	RX-7	Bolt, Shift Fork	2	MANA-17-304	RX-7	Shift Rail	1	3514-26-
4352-17-314	RX-7	Washer, Shift Fork	2	MANA-17-305A	RX-7	Dog Ring	3	4352-26-
4352-17-331	RX-7	Extension Housing	1	MANA-17-403	RX-7	Bell Housing	1	4352-26-
0810-17-332	RX-7	Needle Bearing, Ext. Hsg	2	MANA-17-9001	RX-7	Bearing, Motion Shaft, Frt.	1	4352-49-2
0810-17-333	RX-7	Spacer, Ext. Hsg	1	MANA-17-90015	RX-7	Retaining Ring	2	4352-49-2
0810-17-334	RX-7	Retaining Ring, Ext. Hsg	2	MANA-17-90016	RX-7	Retaining Ring	2	4352-28-1
0837-17-335	RX-7	Oil-Seal, Ext. Hsg	1	MANA-17-90018	RX-7	Bearing	1	4352-28-1
4352-17-402	RX-7	Fork 1-2	1	MANA-17-90019	RX-7	Bearing	1	4352-28-1
4352-17-404	RX-7	Fork 3-4	1	MANA-17-9002	RX-7	Bearing, Countershaft, Front & Rear	1	4352-28-2
4352-17-406	RX-7	Fork 5-R	1	MANA-17-90021	RX-7	Retaining Ring	1	4352-28-3
4352-17-410	RX-7	Rod End 1-2	1	MANA-17-90023	RX-7	Lock Nut	1	4352-28-3
4352-17-422	RX-7	Rod End 3-4	1	MANA-17-90024	RX-7	Retaining Ring	1	4352-28-4
4352-17-432	RX-7	Rod End 5-R	1	MANA-17-90025	RX-7	Retaining Ring	1	4352-28-4
4352-17-450	RX-7	Control Lever	1	MANA-17-90029	RX-7	Input Seal	1	4352-28-4
4352-17-461	RX-7	Control-Lever End	1	MANA-17-90035	RX-7	Bearing, Tail Shaft	2	4352-28-4
4352-17-510	RX-7	Change Lever	1	MANA-17-90036	RX-7	O-Ring	1	4352-28-7
4352-17-611	RX-7	5th Gear, 0.839	1	MANA-17-9004	RX-7	Inner Race	1	9957-44-7
8868-17-611	RX-7	5th Gear, 0.881	1	MANA-17-9005	RX-7	Needle Bearing, Reverse Drive	1	9960-62-3
4352-17-612	RX-7	Needle Bearing, Over Top Gear	1	MANA-17-9006	RX-7	Inner Race, Reverse Idle	1	4352-32-9
4352-17-613	RX-7	Inner Race, Over Top Gear	1	MANA-17-9007	RX-7	Needle Bearing, Reverse Idle	1	4352-32-9
4352-17-621	RX-7	Clutch Hub	1	MANA-17-9008	RX-7	Needle Bearing, (1-5)	5	4352-33-2
4352-17-622	RX-7	Clutch-Hub Sleeve	1	MANA-17-F2936	RX-7	Final Gear 29/36	1	4352-33-6
4352-17-623	RX-7	Spacer	1	DRIVE SYSTEM				4352-33-62
4352-39-340	Common	Transmission Mount	1	4352-25-100	RX-7	Drive Shaft	1	4352-33-72
0820-79-890	Common	Shift Knob	1	4352-25-130	RX-7	Sliding Yoke	1	4352-34-13
9960-66-2563	Common	Bearing, Main Shaft Rear	1	4352-25-300	RX-7	Center-Bearing Support	1	4352-34-15
9960-66-3043	Common	Bearing, Countershaft Rear	1	4352-25-319	RX-7	Member, Bearing Support	1	4352-34-15
MANA-17-000	RX-7	Transmission, Changeable Gears	1	4352-26-020	RX-7	Axle Casing	1	4352-34-15
MANA-17-02045	RX-7	Gear Set, 20/45	1	4352-26-111A	RX-7	Axle Shaft	2	4352-34-15
MANA-17-02144	RX-7	Gear Set, 21/44	1	4352-26-121	RX-7	Bearing Retainer	2	4352-34-15
MANA-17-02243	RX-7	Gear Set, 22/43	1	4135-26-151	RX-7	Bearing	2	4352-34-15
MANA-17-02342	RX-7	Gear Set, 23/42	1	8545-26-152	RX-7	Bearing, Collar	2	4352-34-30
MANA-17-02441	RX-7	Gear Set, 24/41	1	4352-26-154	RX-7	Oil Seal	2	4352-34-35
MANA-17-02540	RX-7	Gear Set, 25/40	1	8545-26-155	RX-7	Spacer	2	4352-34-35
MANA-17-02639	RX-7	Gear Set, 26/39	1	3514-26-111	RX-3	Axle, Right	1	4352-34-37
MANA-17-02738	RX-7	Gear Set, 27/38	1	3514-26-115	RX-3	Axle, Left	1	4352-34-80
MANA-17-02837	RX-7	Gear Set, 28/37	1	3514-26-130	RX-3	Axle, Bearing Retainer	2	4352-34-85
MANA-17-F2930	RX-7	Final Gear, 29/30	1	3514-26-132	RX-3	Retainer Bolt	4	4352-34-86
MANA-17-02936	RX-7	Change Gear, 30/36	1	1013-27-110	Common	Ring & Pinion, 4.1	1	4352-34-91
MANA-17-F3034	RX-7	Final Gear, 30/34	1	1312-27-110A	Common	Ring & Pinion, 4.8	1	4352-34-96
MANA-17-03035	RX-7	Gear Set, 30/35	1	1393-27-110A	Common	Ring & Pinion, 4.4	1	B001-86-15
MANA-17-03134	RX-7	Gear Set, 31/34	1	1480-27-110	RX-2/RX-7	Ring & Pinion, 5.12	1	B029-86-15
				0839-79-950	RX-2/RX-7	Ring & Pinion, 4.3	1	B001-86-70
				0881-79-720	RX-2/RX-7	Ring & Pinion, 4.6	1	B001-86-90

PART NUMBER	MODEL	DESCRIPTION	QUANTITY	PART NUMBER	MODEL	DESCRIPTION	QUANTITY
4352-27-150A	RX-7	Differential Carrier	1	B029-86-700	GLC	Rear Shock, Right	1
4352-27-171	RX-7	Distance Piece	1	B029-86-900	GLC	Rear Shock, Left	1
0540-27-210	RX-7	Pinion Bearing	1	0870-78-314	RX-3	Center Rubber	2
1391-33-047	RX-7	Wheel Bearing, Inner	2	0870-78-316A	RX-3	Leaf Spring	2
1391-33-075	RX-7	Wheel Bearing, Outer	2	0870-78-410	RX-3	Spring Pin	2
4352-33-061A	RX-7	Hub, Frt.	2	0870-78-414	RX-3	Front Bushing	4
4352-33-065	RX-7	Oil Seal	2	0870-78-420	RX-3	Shackle Plate	2
0820-79-960B	Common	Differential, Lock	1	0870-78-423	RX-3	Shackle Plate No. 2	2
0221-79-967	Common	Friction Plate, Std.	4	0870-78-424	RX-3	Rear Bushing No. 2	4
0221-79-977	Common	Friction Disc, Std.	4	0870-78-429	RX-3	Rear Bushing No. 1	4
0221-79-978	Common	Friction Disc, Oversize	4	0820-78-441	RX-3	Brake Spring, Return	2
0820-79-981A	Common	Side Gear	2	0820-78-442	RX-3	Brake Spring, Return	2
0221-79-987	Common	Copper Washer	2	0820-78-481	RX-3	Wheel-Cylinder Boot	2
0221-79-988	Common	Copper Washer	2				

BRAKE & SUSPENSION

4352-26-251	RX-7	Disk Plate, Rr.	2
4352-26-260	RX-7	Dust Plate, Right	1
4352-26-270	RX-7	Dust Plate, Left	1
3514-26-280	RX-3	Dust Plate, Right	1
3514-26-290	RX-3	Dust Plate, Left	1
4352-26-980	RX-3	Rear Brake Caliper, Right	1
4352-26-990	RX-7	Rear Brake Caliper, Left	1
4352-49-230	RX-7	Brake Pad, SS-123	4
4352-49-280	RX-7	Brake Pad, SS-100	4
4352-28-120	RX-7	Control-Link Bracket	2
4352-28-140	RX-7	Stabilizer Control Rod	2
4352-28-151	RX-7	Stabilizer	1
4352-28-156	RX-7	Rubber Bushing	2
4352-28-200	RX-7	Lower Link	2
4352-28-300	RX-7	Upper Link	2
4352-28-311	RX-7	Spacer	8
4352-28-400	RX-7	Watt Link	1
4352-28-411	RX-7	Spacer	8
4352-28-450	RX-7	Balancing	1
4352-28-455	RX-7	Balancing Bolt	1
4352-28-700	RX-7	Rear Shock	2
9957-44-700	RX-7	Retaining Ring, Balancing	1
9960-62-303	RX-7	Bearing, Balancing	1
4352-32-920	RX-7	Steering Gear	1
4352-33-251	RX-7	Disc Plate	2
4352-33-260	RX-7	Brake Air Duct, Right	1
4352-33-270	RX-7	Brake Air Duct, Left	1
4352-33-610	RX-7	Front Brake Caliper, Right	1
4352-33-710	RX-7	Front Brake Caliper, Left	1
4352-33-625	RX-7	Brake Pad, SS-123	4
4352-33-725	RX-7	Brake Pad, SS-100	4
4352-34-130	RX-7	Tension Rod	2
4352-34-150	RX-7	Stabilizer Control Rod	2
4352-34-151	RX-7	Stabilizer	1
4352-34-152	RX-7	Control-Link Bracket	2
4352-34-153	RX-7	Bolt Set	2
4352-34-155	RX-7	Spacer	8
4352-34-156	RX-7	Rubber Bushing	2
4352-34-159	RX-7	Adjustable Stabilizer	2
4352-34-300	RX-7	Lower Arm, Right	1
4352-34-350	RX-7	Lower Arm, Left	1
4352-34-355	RX-7	Spacer	4
4352-34-375	RX-7	Spacer	4
4352-34-800	RX-7	Cross Member	1
4352-34-850	RX-7	Tension-Rod Bracket, Right	1
4352-34-860	RX-7	Tension-Rod Bracket, Left	1
4352-34-910B	RX-7	Front Damper, Right	1
4352-34-960B	RX-7	Front Damper, Left	1
B001-86-150	GLC	Rear Anti-Roll Bar	1
B029-86-151	GLC	Front Anti-Roll Bar	1
B001-86-700	GLC	Front Shock, Right	1
B001-86-900	GLC	Front Shock, Left	1

BODY PARTS

0000-07-000	RX-7	GTO Nose Panel	1
0000-07-013	RX-7	GTO Rear Fender, Right	1
0000-07-014	RX-7	GTO Rear Fender, Left	1
0000-07-111	RX-7	IMSA Front Fender, Right	1
0000-07-112	RX-7	IMSA Front Fender, Left	1
0000-07-111A	RX-7	IMSA Front Fender MK-II, Right	1
0000-07-112B	RX-7	IMSA Front Fender MK-II, Left	1
0000-07-113	RX-7	IMSA Rear Fender MK-I, Right	1
0000-07-114	RX-7	IMSA Rear Fender Mk-I, Left	1
0000-07-113A	RX-7	IMSA Rear Fender MK-II, Right	1
0000-07-114A	RX-7	IMSA Rear Fender MK-II, Left	1
0000-07-115	RX-7	IMSA Front Air Dam	1
0000-07-115A	RX-7	IMSA Front Air Dam MK-I	1
0000-07-115B	RX-7	IMSA Front Air Dam MK-II	1
0000-07-116	RX-7	IMSA Rear Spoiler	1
0000-07-116B	RX-7	GTO Rear Spoiler	1
0000-07-117	RX-7	Door, Right	1
0000-07-118	RX-7	Door, Left	1
0000-07-117P	RX-7	Door Cap, Right	1
0000-07-118P	RX-7	Door Cap, Left	1
0000-07-119	RX-7	Hood	1
0000-07-120	RX-7	Front Bumper	1
0000-07-121	RX-7	Rear Bumper	1
0000-07-301	RX-7	Rear Window	1
0000-07-302	RX-7	Rear Quarter Window, Right	1
0000-07-303	RX-7	Rear Quarter Window, Left	1
M747-07-111	'86-'87 RX-7	Front Fender, Right	1
M747-07-112	'86-'87 RX-7	Front Fender, Left	1
M747-07-113	'86-'87 RX-7	Rear Fender, Right	1
M747-07-114	'86-'87 RX-7	Rear Fender, Left	1
M747-07-115	'86-'87 RX-7	Front Spoiler	1
M747-07-116	'86-'87 RX-7	Rear Spoiler	1
M747-07-117	'86-'87 RX-7	Door, Right	1
M747-07-118	'86-'87 RX-7	Door, Left	1
M747-07-119	'86-'87 RX-7	Hood	1
M747-07-201	'86-'87 RX-7	Side Panel, Right	1
M747-07-202	'86-'87 RX-7	Side Panel, Left	1
M747-07-215	'86-'87 RX-7	Center Nose Panel	1
M747-07-300	'86-'87 RX-7	Rear Window	1

OTHERS

49KE-18-5070	Common	Timing Light	1
0000-08-101	Common	Three Loy No. 1	1
0000-08-102	Common	Template, Bridgeport	1

METRIC CONVERSIONS

Multiply: by: to get: | Multiply: by: to get:

LINEAR

inches	X	25.4	= millimeters(mm)	X	0.03937	= inches
feet	X	0.3048	= meters (m)	X	3.281	= feet
yards	X	0.9144	= meters (m)	X	1.0936	= yards
miles	X	1.6093	= kilometers (km)	X	0.6214	= miles
inches	X	2.54	= centimeters (cm)	X	0.3937	= inches
microinches	X	0.0254	= micrometers(Mm)	X	39.37	= microinches

AREA

inches ²	X	645.16	= millimeters ² (mm ²)	X	0.00155	= inches ²
inches ²	X	6.452	= centimeters ² (cm ²)	X	0.155	= inches ²
feet ²	X	0.0929	= meters ² (m ²)	X	10.764	= feet ²
yards ²	X	0.8361	= meters ² (m ²)	X	1.196	= yards ²
acres	X	0.4047	= hectares(10 ⁴ m ²) (ha)	X	2.471	= acres
miles ²	X	2.590	= kilometers ² (km ²)	X	0.3861	= miles ²

VOLUME

inches ³	X	16387	= millimeters ³ (mm ³)	X	0.000061	= inches ³
inches ³	X	16.387	= centimeters ³ (cm ³)	X	0.06102	= inches ³
inches ³	X	0.01639	= liters (l)	X	61.024	= inches ³
quarts	X	0.94635	= liters (l)	X	1.0567	= quarts
gallons	X	3.7854	= liters (l)	X	0.2642	= gallons
feet ³	X	28.317	= liters (l)	X	0.03531	= feet ³
feet ³	X	0.02832	= meters ³ (m ³)	X	35.315	= feet ³
fluid oz	X	29.57	= milliliters (ml)	X	0.03381	= fluid oz
yards ³	X	0.7646	= meters ³ (m ³)	X	1.3080	= yards ³
teaspoons	X	4.929	= milliliters (ml)	X	0.2029	= teaspoons
cups	X	0.2366	= liters (l)	X	4.227	= cups

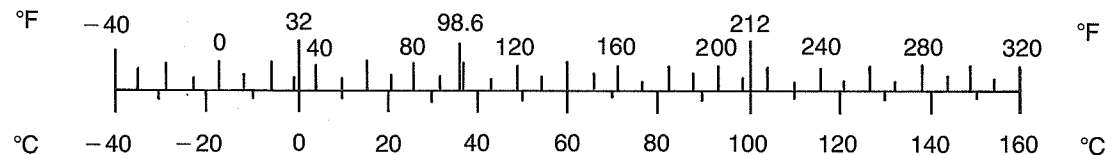
MASS

ounces (av)	X	28.35	= grams (g)	X	0.03527	= ounces (av)
pounds (av)	X	0.4536	= kilograms (kg)	X	2.2046	= pounds (av)
tons (2000 lb)	X	907.18	= kilograms (kg)	X	0.001102	= tons (2000 lb)
tons (2000 lb)	X	0.90718	= metric tons (t)	X	1.1023	= tons (2000 lb)

FORCE

ounces—f(av)	X	0.278	= newtons (N)	X	3.597	= ounces—f(av)
pounds—f(av)	X	4.448	= newtons (N)	X	0.2248	= pounds—f(av)
kilograms—f	X	9.807	= newtons (N)	X	0.10197	= kilograms—f

TEMPERATURE



Degrees Celsius (C) = 0.556 (F - 32)

Degree Fahrenheit (F) = (1.8C) + 32

Multiply:	by:	to get:	Multiply:	by:	to get:
-----------	-----	---------	-----------	-----	---------

ACCELERATION

feet/sec ²	X	0.3048	=	meters/sec ² (m/s ²)	X	3.281	=	feet/sec ²
inches/sec ²	X	0.0254	=	meters/sec ² (m/s ²)	X	39.37	=	inches/sec ²

ENERGY OR WORK (Watt-second = joule = newton-meter)

foot-pounds	X	1.3558	=	joules (J)	X	0.7376	=	foot-pounds
calories	X	4.187	=	joules (J)	X	0.2388	=	calories
Btu	X	1055	=	joules (J)	X	0.000948	=	Btu
watt-hours	X	3600	=	joules (J)	X	0.0002778	=	watt-hours
kilowatt-hrs	X	3.600	=	megajoules (MJ)	X	0.2778	=	kilowatt-hrs

FUEL ECONOMY & FUEL CONSUMPTION

miles/gal	X	0.42514	=	kilometers/liter(km/l)	X	2.3522	=	miles/gal
-----------	---	---------	---	------------------------	---	--------	---	-----------

Note:
 235.2/(mi/gal) = liters/100km
 235.2/(liters/100km) = mi/gal

PRESSURE OR STRESS

inches Hg (60F)	X	3.377	=	kilopascals (kPa)	X	0.2961	=	inches Hg
pounds/sq in.	X	6.895	=	kilopascals (kPa)	X	0.145	=	pounds/sq in
inches H ₂ O(60F)	X	0.2488	=	kilopascals (kPa)	X	4.0193	=	inches H ₂ O
bars	X	100	=	kilopascals (kPa)	X	0.01	=	bars
pounds/sq ft	X	47.88	=	pascals (Pa)	X	0.02088	=	pounds/sq ft

POWER

horsepower	X	0.746	=	kilowatts (kW)	X	1.34	=	horsepower
lb-ft/min	X	0.0226	=	watts (W)	X	44.25	=	lb-ft/min

TORQUE

pound-inches	X	0.11298	=	newton-meters (N-m)	X	8.851	=	pound-inches
pound-feet	X	1.3558	=	newton-meters (N-m)	X	0.7376	=	pound-feet
pound-inches	X	0.0115	=	kilogram-meters (Kg-M)	X	87	=	pound-inches
pound-feet	X	0.138	=	kilogram-meters (Kg-M)	X	7.25	=	pound-feet

VELOCITY

miles/hour	X	1.6093	=	kilometers/hour(km/h)	X	0.6214	=	miles/hour
feet/sec	X	0.3048	=	meters/sec (m/s)	X	3.281	=	feet/sec
kilometers/hr	X	0.27778	=	meters/sec (m/s)	X	3.600	=	kilometers/hr
miles/hour	X	0.4470	=	meters/sec (m/s)	X	2.237	=	miles/hour

COMMON METRIC PREFIXES

mega (M)	=	1,000,000	or	10 ⁶	centi (c)	=	0.01	or	10 ⁻²
kilo (k)	=	1,000	or	10 ³	milli (m)	=	0.001	or	10 ⁻³
hecto (h)	=	100	or	10 ²	micro (μ)	=	0.000,001	or	10 ⁻⁶

INDEX

A

Accel 42, 43, 44
air filters 33-35
Alfa-Romeo 8
American Petroleum Institute (API) 64
anti-roll bars 124-125, 127-128
Autotrix 131

B

BF Goodrich 8, 11, 13, 127, 128
BIS Smartparts 130, 132
Baldwin, Jack 15
Bo Laws Automotive 35
Borg and Beck 115
brakes 119-124
bridge port 14, 31, 85-87

C

California Air Resources Board (CARB) 22
capacitive discharge ignition, see ignition, electronic
CarTech 38
catalytic converters 20-22
Certified Brakes 119
Champion (sparkplugs) 45, 52
Chrysler Corporation 39
clutch
 disc 112-115
 pressure plate 113-115
Compucar 37
Cooley, John F. 4
Cosmo Sports (vehicle) 8
Curtis-Wright 8

D

DG Valve Co. 59
Daimler-Benz 8
Dellorto carburetors 29, 33, 34, 36
 tuning 57-60
Dembs, Chris 9
Design Energy 130, 131, 132
differential 117-118
Downing/Atlanta team 19, 21, 31, 32, 44, 47, 63, 64, 72,
 76, 115
Downing, David 15
Dynamic Effect Intake System 26

E

EGT 18
eccentric shaft 9, 11, 78-81, 95-96, 99, 100
 counterweight 78-79, 104
 oil jets 79-80
electronic engine controls 25
Electronic Gasoline Injection 28, 32, 52
Engman, Rick 21, 31, 32, 44, 45, 48, 63, 67, 68, 69, 70,
 72-73 74, 75, 87, 88, 89-91, 92, 94

F

flywheel 114-116
Fram 35, 66
Froede, Dr. W. G. 6, 7
fuel filters 35
fuel pumps 35

G

G & G Specialties 118
General Motors 8
Grosse jet 59

H

Harrison, Pete 46
headers 15, 17, 19-20, 22-23
Holley carburetors 29-31, 34, 36
 modifications 30, 54-56

I

ignition
 electronic 39, 42-44
 point type 39-42, 51
 timing 47-50, 51
intake manifold
 high performance 27, 29-32
 stock 28-29

K

K&N filters 33-34
Kaminari 131, 132-133
Kelsey, Richard 23
Kendall, Tom 15
Kent Racing 131
Kettering, Charles 39
Koni 128, 131

L

Russi
Loctite
Lola

M

MSD
Maffu
Mand
Maria
Mazda
Mazda
Meder
muffle

N

Nissan
nitrous
NSU

O

oil
 filter
 grad
 mete
 pan
 pre
 pres
 pres
 pum
Otto, N

P

Pacific
Pacific
periphe
peritroc
Porsche

R

R-100
RX-2
RX-3
RX-4
RX-7
RX-7 C
Racing
 48, 5
 118,

L

Russia 24
Loctite 73
Lola 8, 13

M

MSD 42, 43, 44
Maffucci, John 5, 43
Mandeville, Roger 5
Mariah, see Design Energy
Mazda (company) 8, 25, 61, 92, 93
Mazmart 19, 20, 43, 53, 60, 65, 67, 92, 114
Mederer, Jim 22, 53, 59-60, 63, 81
mufflers 18-22

N

Nissan 8
nitrous oxide 36-37
NSU 5-8

O

oil
filter 66
grades (viscosities) 64-65, 68
metering system 61-64
pan and baffle 67
premix 63-64
pressure 61, 65-66
pressure regulator 65
pump 63, 66, 68
Otto, Nikolaus 4

P

Pacific Avatar 133
Pacific T-Top 131, 133
peripheral port 12, 13, 87-90
peritrochoid curve 10
Porsche 8

R

R-100 (vehicle) 8
RX-2 (vehicle) 8, 9
RX-3 (vehicle) 9, 14, 20
RX-4 (vehicle) 9
RX-7 (vehicle) 9, 10, 11, 20
RX-7 Club of America 127, 128, 129, 132
Racing Beat 14, 15, 19, 20, 21, 29-32, 38, 43, 45, 47,
48, 53, 60, 65, 67, 77, 79, 84, 86, 87, 92, 114, 117,
118, 128, 134

Ramelli, Agostino 4

Rolls Royce 8

Rotary Engineering 19, 20, 21, 31, 53, 134

rotor 9, 10, 11, 16, 69, 74-76, 96

apex seals 69-71, 98, 100

bearings 72-73

corner seals 72, 98

oil seals 72, 96-97

side seals 72, 98

rotor and side housings 11, 74-75, 82-92, 94-95, 98-100

water-jacket modification 92

Russell, Jim 12

S

Sensaud de Lavou, Dimitri 5, 6

Senske, Chris 23

Sherman, Don 11

shock absorbers 128

side port 12, 13, 85

six-port induction 10, 25-26

springs (suspension) 128

stationary gears 77, 94-95

T

tension bolts 102-103

thermal reactors 20

Threebond 89

three-rotor engine 6

Trans-Acc 131, 134

transmission 118-119

Toyo Kogyo, see Mazda

turbocharging 37-38

V

Van Nugteren, Rick 11

Ventry 134

Vestatec 130, 131, 134

W

Wankel, Felix 5,6

Watt, James 4, 5

Weber carburetors 29, 34, 36, 80

jetting 31-32, 57-60

Y

Yamamoto, Kenichi 8

Yanmar 8

HP Automotive Books

Handbook Series

Auto Electrical Handbook—Horner	\$12.95
Baja Bugs & Buggies—Hibbard	\$9.95
Brake Handbook—Puhn	12.95
Clutch & Flywheel Handbook—Monroe	12.95
How To Make Your Car Handle—Puhn	9.95
Metal Fabricator's Handbook—Fournier	12.95
Mustang Restoration Handbook—Taylor	14.95
Off-Roader's Handbook—Crow & Murray	12.95
Paint & Body Handbook—Taylor & Hofer	9.95
Street Rodder's Handbook—Oddo	14.95
Two-Stroke Tuner's Handbook—Jennings	5.95
Turbochargers—MacInnes	12.95
Turbo Hydra-matic 350 Handbook—Sessions	17.95
Welder's Handbook—Finch & Monroe	12.95

Carburetors

Holley 2300—Urich	\$5.95
Holley 4150—Urich	5.95
Holley 5200—Urich	4.95
Holley Carburetors & Manifolds—Fisher & Urich	14.95
Rochester Carburetors—Roe	12.95

Performance Series

How To Hotrod Big-Block Chevys—Fisher & Waar	\$12.95
How To Hotrod Small-Block Chevys—Fisher & Waar	9.95
How To Hotrod VW Engines—Fisher	9.95
How To Hotrod Your 2.0-Liter OHC Ford—Vizard	12.95
How To Hotrod Your Buick V6	12.95
How To Modify Your Nissan/Datsun OHC Engine—Honsowetz	12.95

Rebuild Series

How To Rebuild Your Big-Block Chevy—Wilson	9.95
How To Rebuild Your Big-Block Ford—Christ	9.95
How To Rebuild Your Ford V8—351C-351M-400-429-460—Monroe	9.95
How To Rebuild Your Honda Car Engine—Wilson	9.95
How To Rebuild Your Nissan/Datsun OHC Engine—Monroe	12.95
How To Rebuild Your Small-Block Chevy—Vizard	9.95
How To Rebuild Your Small-Block Ford—Monroe	9.95
How To Rebuild Your Small-Block Mopar—Taylor & Hofer	12.95
How To Rebuild Your VW Air-Cooled Engine—Wilson	12.95

Special Interest

American Supercar—Huntington	\$9.95
Camaro, From A Through Z-28—Lamm (hc)	19.95
Camaro, The Third Generation—Lamm (hc)	19.95
Fabulous Firebird—Lamm (hc)	19.95
Fiero—Witzenburg (hc)	19.95
The Newest Corvette From A Through Z-52—Lamm (hc)	24.95
Vintage & Historic Racing Cars—Gabbard (hc)	25.00

(hc) = hardcover

All other books are paperback.

Books are available at your local bookstore, auto store or order direct from the publisher. Send check or money order payable in U.S. funds to:

HPBooks, Inc., P.O. Box 5367, Dept. MAZ-37, Tucson, AZ 85703

Include \$1.95 postage and handling for first book; \$1.00 for each additional book. Arizona residents add 7% sales tax. Please allow 4—6 weeks for delivery. Prices subject to change without notice.

More Performance from Your MAZDA RX-7

Jim Downing and Dave Emanuel tell how to modify and prepare your RX-7's engine, drive line and chassis for optimum power, durability and overall performance.

Explains how to choose, prepare and assemble rotors, housings and seals; design an exhaust system for street, strip or track; and choose and tune Weber, Mikuni and

Holley carburetors for maximum power and economy. Heavy-duty drive line parts, suspension hardware and body add-ons are also covered.

If you want to increase the performance of your MAZDA RX-7, you need this book!

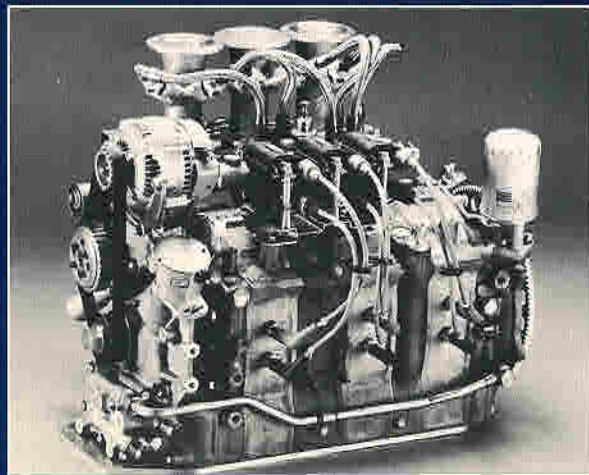
Clayton Cunningham Racing GTU RX-7 in traffic. Photo courtesy Mazda.



Roger Mandeville's highly successful IMSA GTU RX-7. Photo courtesy Mazda.



Racing Beat prepped turbo '86 RX-7 set C/GT class record of over 238 mph at Bonneville Salt Flats. Photo courtesy Racing Beat.



Three-rotor, fuel-injected 13G race engine used in IMSA GTP 757 and GTO RX-7. Photo courtesy Mazda.

\$12.95
\$18.50 Canada

HPBooks

A division of HPBooks, Inc.
Tucson, Arizona

