

WINDOW REGULATOR, GLASS, AND GUIDE

COMPONENTS

Caution

- Obtain the code number and deactivate the audio anti-theft system before disconnecting the battery. (Refer to Section T.)

Removal / Installation

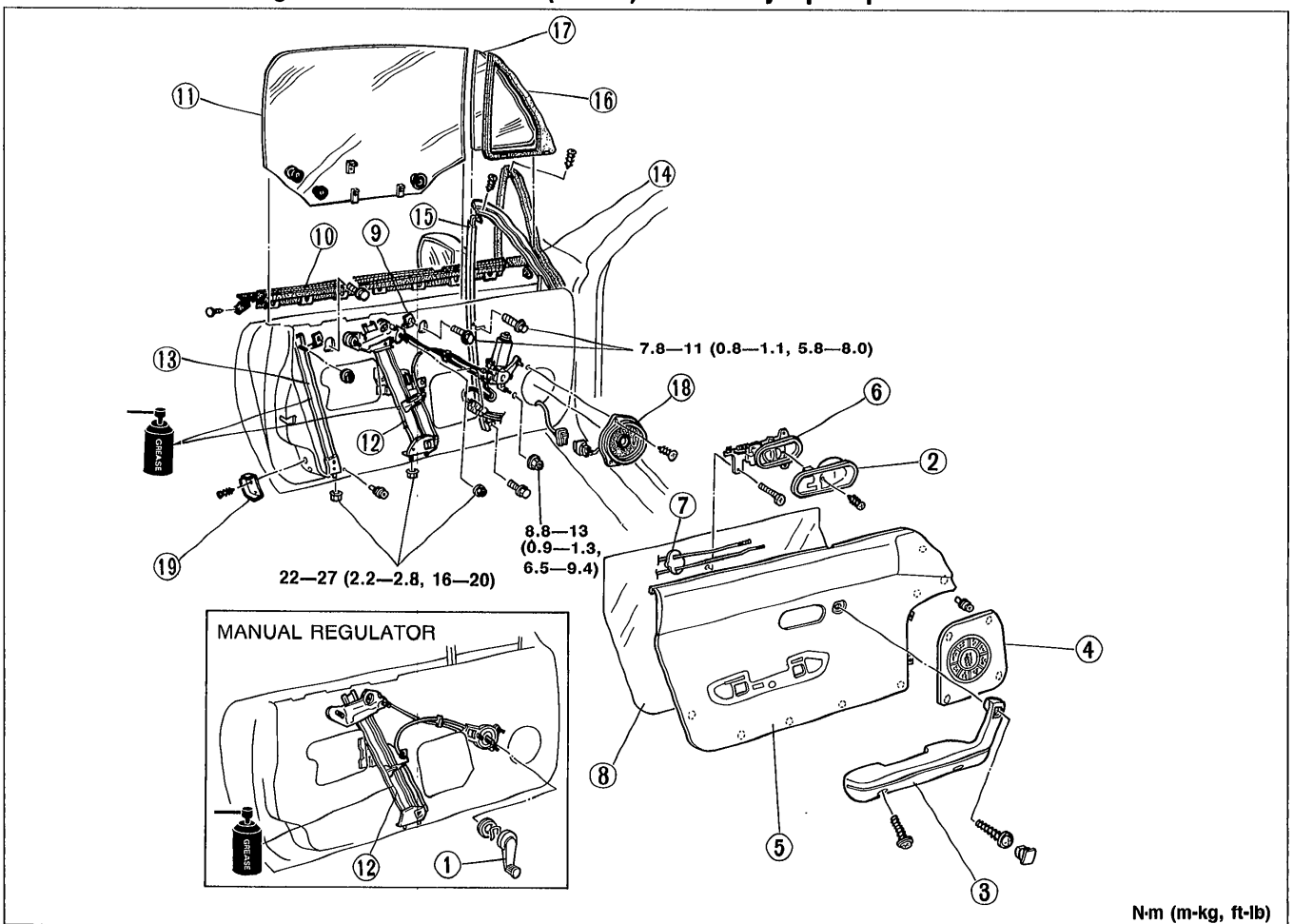
1. Disconnect the negative battery cable.
2. Remove in the order shown in the figure.
3. Install in the reverse order of removal.

Caution

- Remove the door screen carefully so that it may be reused.

Note

- Raise the door glass about 190mm (7.5 in) from fully-open position.



05U0SX-010

- | | | |
|---|---|-----------------------------|
| 1. Regulator handle
Removal Note .. page S-10
Installation Note page S-10 | 6. Inner handle | 13. Glass guide |
| 2. Inner handle cover | 7. Sealing pad | 14. Door weatherstrip |
| 3. Arm rest | 8. Door screen | 15. Division channel |
| 4. Speaker grille
Removal Note .. page S-55 | 9. Upper stop | 16. Weatherstrip |
| 5. Door trim
Removal Note .. page S-55 | 10. Front beltline molding
Removal Note .. page S-28 | 17. Quarter glass |
| | 11. Door glass
Adjustment page S-10 | 18. Speaker (If necessary) |
| | 12. Window regulator | 19. Dovetail (If necessary) |