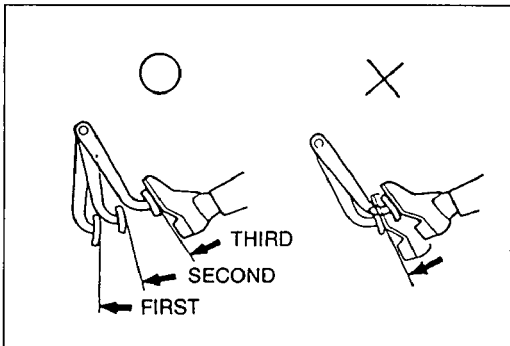
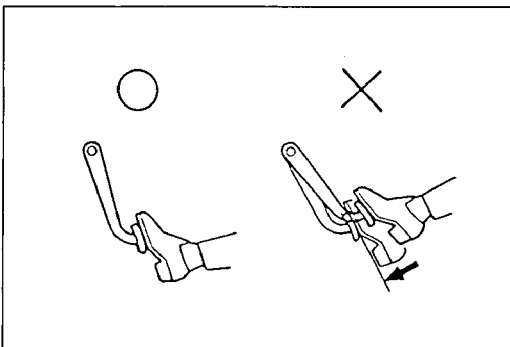


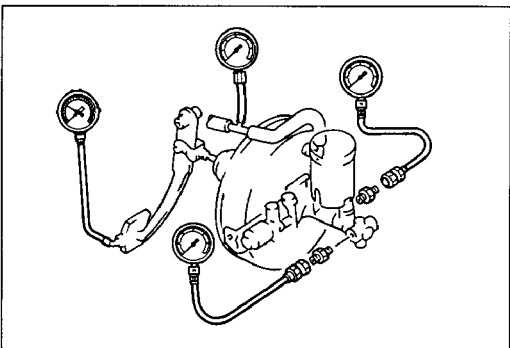
05U0PX-021



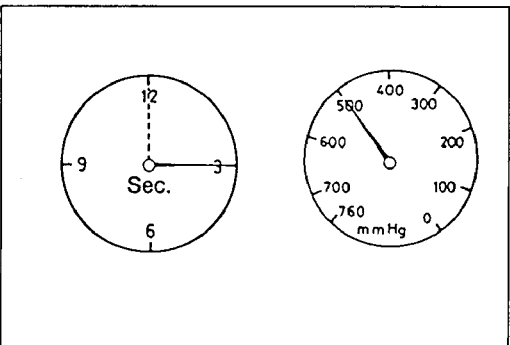
05U0PX-022



05U0PX-023



9MU0PX-033



05U0PX-024

**POWER BRAKE UNIT**

**Quick Inspection, On-vehicle  
Power brake unit function check  
(Simple method)**

**Step 1**

1. With the engine stopped, depress the pedal a few times.
2. With the pedal depressed, start the engine.
3. If immediately after the engine starts the pedal moves down slightly, the unit is operating.

**Step 2**

1. Start the engine and let it run **1 or 2 minutes**.
2. Stop the engine.
3. Depress the pedal with the usual force.
4. If the first pedal stroke is long and becomes shorter with subsequent strokes, the unit is operating.
5. If a problem is found, inspect for damage or improper connection of the check valve or vacuum hose. Repair if necessary, and inspect it once again.

**Step 3**

1. Start the engine.
2. Depress the pedal with the usual force.
3. Stop the engine with the pedal depressed.
4. Hold the pedal down for **about 30 seconds**.
5. If the pedal height does not change, the unit is operating.
6. If there is a problem, check for damage or improper connection of the check valve or vacuum hose. Repair if necessary, and check once again.

If the nature of the problem is still not clear after following the 3 steps above, follow the more detailed check described in "Method using tester," below.

**(Method using tester)**

Connect a pressure gauge, vacuum gauge, and pedal depression force gauge as shown in the figure. After bleeding the air from the pressure gauge, conduct the test as described in the 3 steps below.

**Note**

- Use commercially available gauges and pedal depression force gauge.

**a) Checking for vacuum loss  
Unloaded condition**

1. Start the engine.
2. Stop the engine when the vacuum gauge indicates **500 mmHg (19.7 inHg)**.
3. Observe the vacuum gauge for **15 seconds**. If the gauge indicates **475—500 mmHg (18.7—19.7 inHg)**, the unit is operating.