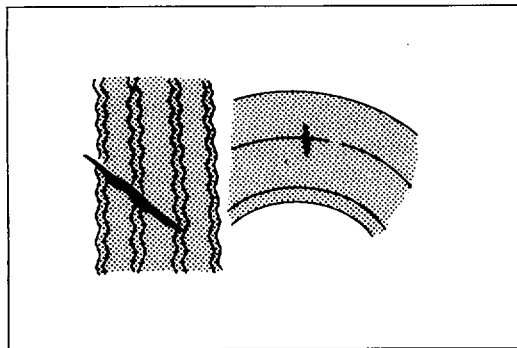
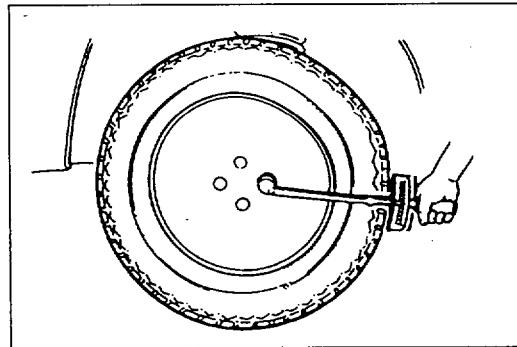


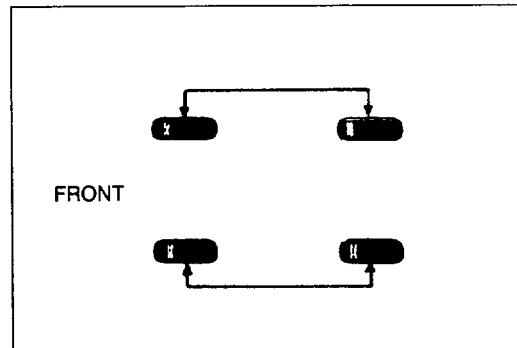
05U0QX-007



05U0QX-008



05U0QX-009



05U0QX-010

**Troubleshooting guide**

Abnormal tire wear patterns shown in the illustration can occur. Refer to the chart for the possible causes and actions.

	Possible cause	Action
(a)	<ul style="list-style-type: none"> <li>• Underinflation (both sides worn)</li> <li>• Incorrect camber (one side worn)</li> <li>• Hard cornering</li> <li>• Lack of rotation</li> </ul>	<ul style="list-style-type: none"> <li>• Measure and adjust pressure</li> <li>• Repair or replace suspension parts</li> <li>• Reduce speed</li> <li>• Rotate tires</li> </ul>
(b)	<ul style="list-style-type: none"> <li>• Overinflation</li> <li>• Lack of rotation</li> </ul>	<ul style="list-style-type: none"> <li>• Measure and adjust pressure</li> <li>• Rotate tires</li> </ul>
(c)	<ul style="list-style-type: none"> <li>• Incorrect toe-in</li> </ul>	<ul style="list-style-type: none"> <li>• Adjust toe-in</li> </ul>
(d)	<ul style="list-style-type: none"> <li>• Incorrect camber or caster</li> <li>• Malfunctioning suspension</li> <li>• Unbalanced wheel</li> <li>• Out-of-round brake drum or disc</li> <li>• Other mechanical conditions</li> <li>• Lack of rotation</li> </ul>	<ul style="list-style-type: none"> <li>• Repair or replace suspension parts</li> <li>• Repair or replace</li> <li>• Balance or replace</li> <li>• Correct or replace</li> <li>• Correct or replace</li> <li>• Rotate tires</li> </ul>

4. Cracks, damage, and foreign matter (such as metal pieces, nails, and stones) in the tire and cracks, deformation, and damage to the wheel.
5. Loose wheel lug nut(s).
6. Air leaking from valve stem.

**REMOVAL / INSTALLATION**

Tighten the lug nuts to the specified torque in a crisscross fashion.

**Tightening torque:**

**88—118 N·m (9—12 m·kg, 65—87 ft·lb)**

**Caution**

- **The wheel-to-hub contact surfaces must be clean.**
- **Never apply oil to the nuts, bolts, or wheels, which cause looseness or seizure of the lug nuts.**

**TIRE ROTATION**

To prolong tire life and assure uniform tire wear, rotate the tires every 6000 km (3750 miles), sooner if irregular wear develops.

**Caution**

- **Do not include “TEMPORARY USE ONLY” spare tire in rotation.**
- **After rotating the tires, adjust each tire to the specified air pressure. (Refer to page Q-3.)**